

SAN DIEGO, CALIFORNIA

RNAV (RNP) Z RWY 36

| | | |
|----------|------------|------|
| APCH CRS | Rwy Idg | 8001 |
| 004° | TDZE | 19 |
| | Arprt Elev | 26 |

(USN)

NORTH ISLAND NAS (HALSEY FLD) (KNZY)

RNP AR APCH-GPS, RF.

▼ * When ALS inop, increase vis to 7/8 mile.

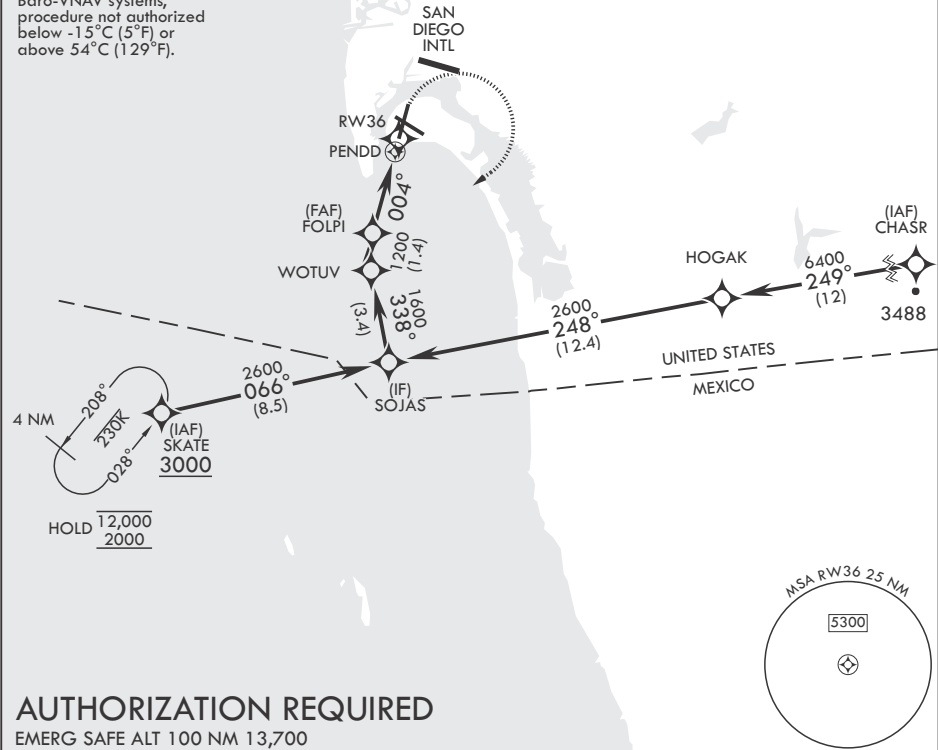
SALS

MISSED APPROACH: Climb to 700, then climbing right turn to 2000 direct SKATE and hold.

| | | | | | |
|----------------|--|-----------------------|--------------------------|--------------------------|---------|
| ATIS★ 317.8 | SOCAL APP CON/DEP CON 125.15 317.55 | TOWER★ 135.1 336.4 | GND CON 118.0 360.675 | CLNC DEL 128.4 288.25 | ASR/PAR |
|----------------|--|-----------------------|--------------------------|--------------------------|---------|

When local altimeter setting not received, use San Diego (SAN) Intl. altimeter setting.

For uncompensated Baro-VNAV systems, procedure not authorized below -15°C (5°F) or above 54°C (129°F).



AUTHORIZATION REQUIRED
EMERG SAFE ALT 100 NM 13,700

