

SAN DIEGO, CALIFORNIA

RNAV (RNP) RWY 29

APCH CRS	Rwy Idg	7501
291°	TDZE	26
	Arpt Elev	26

- (USN)

NORTH ISLAND NAS (HALSEY FLD) (KNZY)

RNP AR APCH—GPS, RF.



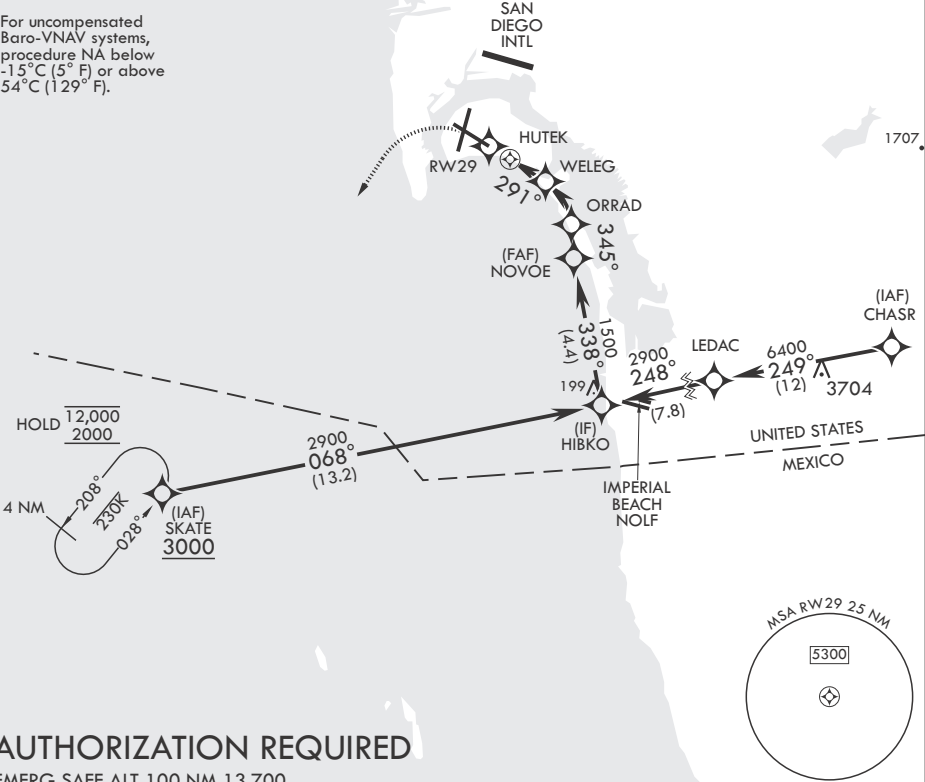
MISSED APPROACH: Climb to 700, then climbing left turn to 2000 direct SKATE and hold.

\* When ALS inop, increase vis to 7/8 mile.

ATIS★	SOCAL APP CON/DEP CON	TOWER★	GND CON	CLNC DEL	ASR/PAR
317.8	125.15 317.55	135.1 336.4	118.0 360.675	128.4 288.25	

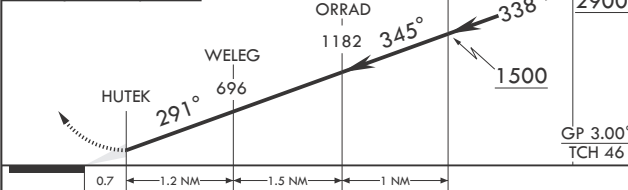
When local altimeter setting not received, use San Diego (SAN) Intl. altimeter setting.

For uncompensated Baro-VNAV systems, procedure NA below -15°C (5° F) or above 54°C (129° F).



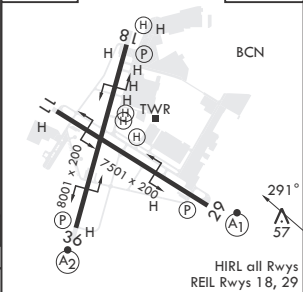
AUTHORIZATION REQUIRED

EMERG SAFE ALT 100 NM 13,700



CATEGORY	A	B	C	D
RNP 0.10 DA*	310-1/2	284	(300-1/2)	

ELEV 26	TDZE 26
---------	---------



SAN DIEGO, CALIFORNIA

32°42'N - 117°13'W

NORTH ISLAND NAS (HALSEY FLD) (KNZY)

Orig 28NOV24

RNAV (RNP) RWY 29

SW-3, 10 JUL 2025 to 07 AUG 2025

SW-3, 10 JUL 2025 to 07 AUG 2025