

| | | |
|--|-------------------------|--|
| LOC/DME I-UBR 110.9 Chn 46 | APCH CRS 275° | Rwy Idg N/A THRE N/A Arpt Elev 26 |
|--|-------------------------|--|

[USN]

NORTH ISLAND NAS (HALSEY FIELD) (KNZY)

T * CAUTION: Maneuvering for circling approach not authorized W of Rwy18-36 centerline. Approach authorized for Rwy 18 or left downwind approach to Rwy 29 after flying down Rwy 18.

† MISSED APPROACH: Climb and maintain 2000 via hdg 177°, intercept PGY VORTAC R-250 to HANIS and hold.

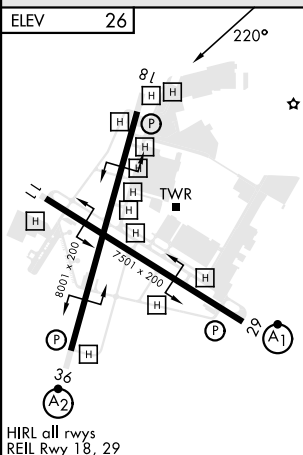
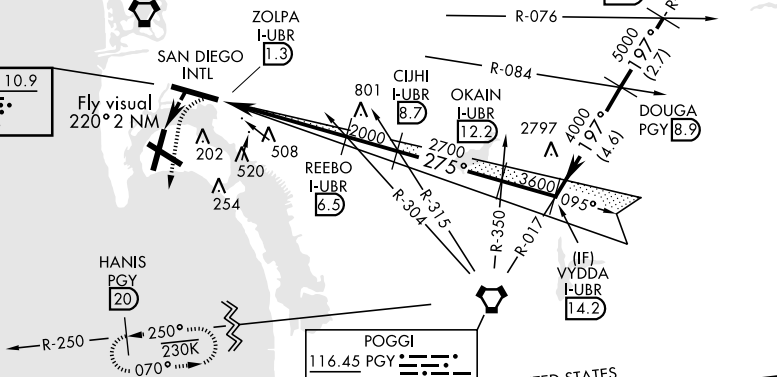
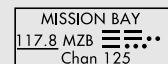
| | | | | | | |
|-----------------|--------------------------------|-------------------------------------|----------------------------------|--------------------------|--------------------------|---------|
| ATIS ★ 317.8 | SOCAL APP CON 125.15 317.55 | NORTH ISLAND TOWER ★ 135.1 336.4 | LINDBERGH TOWER 118.3 338.225 | GND CON 118.0 360.675 | CLNC DEL 128.4 288.25 | PAR/ASR |
|-----------------|--------------------------------|-------------------------------------|----------------------------------|--------------------------|--------------------------|---------|

† CAUTION: Do not overfly Point Loma.

CAUTION: Aircraft executing missed approach after beginning circling maneuver do not return to missed approach point.

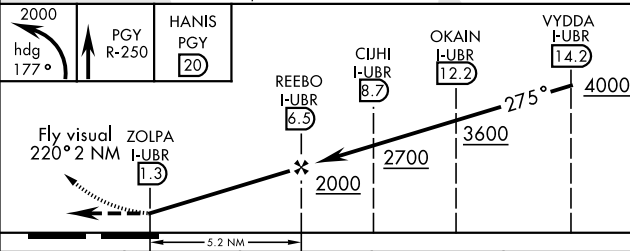
Procedure NA at night when VGSI inop at San Diego Intl.

Procedure NA for arrivals
at RYAHH
via V66-460-514 eastbound.



HIRL all rwys
REIL Rwy 18. 29

EMERG SAFE ALT 100 NM 13,700



| FAF to MAP 5.2 NM | | | | | | CATEGORY | A | B | C | D |
|-------------------|------|------|------|------|------|--------------|---------------------|---|--------------|--------------|
| Knots | 60 | 90 | 120 | 150 | 180 | C CIRCLING * | 860-2½ 834 (900-2½) | | 880-2½ | 880-2¾ |
| Min:Sec | 5:12 | 3:28 | 2:36 | 2:05 | 1:44 | | | | 854 (900-2½) | 854 (900-2¾) |

SAN DIEGO, CALIFORNIA

32°42'N-117°13'W NORTH ISLAND NAS (HALSEY FIELD) (KNZY)

Amdt 7 26DEC24

LOC/DME-A

SW-3, 10 JUL 2025 to 07 AUG 2025

SW-3, 10 JUL 2025 to 07 AUG 2025