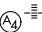
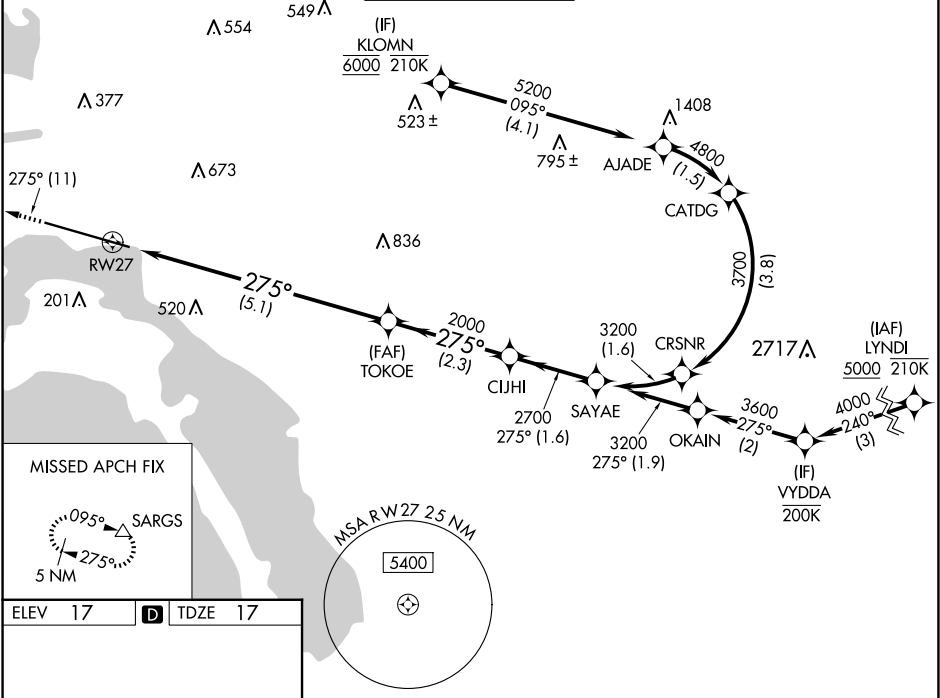


APP CRS	Rwy Ldg	7591
275°	TDZE	17
	Apt Elev	17

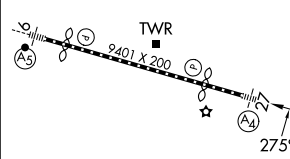
RNAV (RNP) Z RWY 27
SAN DIEGO INTL (SAN)

RNP AR APCH - GPS. Authorization required. From KLOMN: RF.	MALS 	MISSED APPROACH: Climb to 2500 on track 275° to SARGS and hold.
▼ For uncompensated Baro-VNAV systems, procedure NA below 5°C or above 44°C. For inop ALS, increase RNP 0.30 all Cats visibility to 2 1/2 SM. Straight-in Rwy 27 at night, operational VGSI required, remain on or above VGSI glidepath until threshold.		

D-ATIS 134.8	SOCAL APP CON 119.6 363.1 (WEST) 124.35 279.625 (EAST)	LINDBERGH TOWER 118.3 338.225	GND CON 123.9	CLNC DEL 125.9	CPDLC
-----------------	--	----------------------------------	------------------	-------------------	-------



ELEV 17		TDZE 17
---------	---	---------

	2500 ↑ tr 275°	SARGS △	VGSI and RNAV glidepath not coincident (VGSI Angle 3.50/TCH 66).		
	See planview for multiple IF locations.				
	TOKOE 2000 CUJHI 2700 SAYAE 3200 GP 3.50° TCH 75				
	CATEGORY	A	B	C	D
	RNP 0.11 DA	624-1½ 607 (700-1½)			
RNP 0.30 DA	789-2 772 (800-2)				
AUTHORIZATION REQUIRED					

SW-3, 10 JUL 2025 to 07 AUG 2025

SW-3, 10 JUL 2025 to 07 AUG 2025