

LOC/DME I-UBR 110.9 Chan 46	APP CRS 275°	Rwy Ldg 7591 TDZE 17 Apt Elev 17
---	------------------------	---

LOC RWY 27
SAN DIEGO INTL (SAN)

From LYNDI: RNAV 1-DME/DME/IRU or GPS required.

RNAV 1-DME/DME/IRU or GPS required for procedure entry.

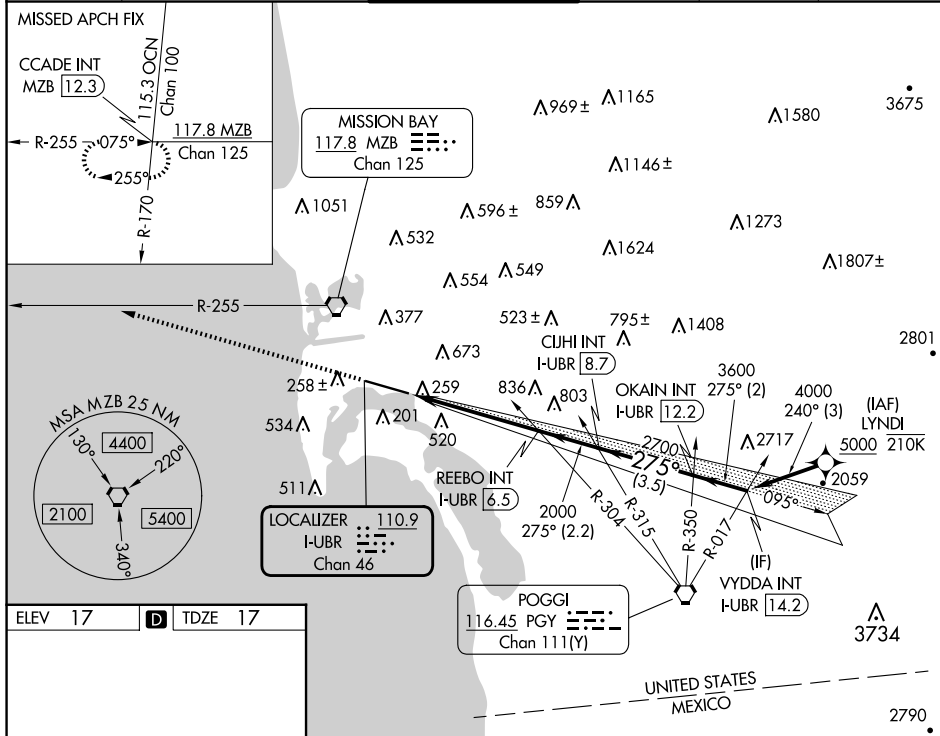
T Rwy 27 helicopter visibility reduction below 1 SM NA. Circling NA north of
A Rwy 9-27. Inop table does not apply to Cats A and B. For inop ALS, increase
S-27 Cats C and D visibility to $1\frac{1}{8}$ SM.

MALS

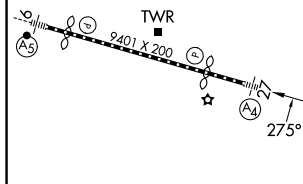
 $\textcircled{A_4} - \text{---} \begin{array}{c} \text{---} \\ \text{---} \\ \text{---} \\ \text{---} \end{array} \text{---}$

MISSED APPROACH: Climb to 2500 on heading 275° and on MZB VORTAC R-255 to CCADE INT/MZB 12.3 DME and hold.

D-ATIS 134.8	SOCAL APP CON 119.6 363.1 (WEST) 124.35 279.625 (EAST)	LINDBERGH TOWER 118.3 338.225	GND CON 123.9	CLNC DEL 125.9	CPDLC
------------------------	--	---	-------------------------	--------------------------	-------




ELEV 17	D	TDZE 17
---------	----------	---------



TDZ/CL Rwy 9 and 27
HIRL Rwy 9-27

FAF to MAP 5.2 NM

Knots	60	90	120	150	180
Min:Sec	5:12	3:28	2:36	2:05	1:44

2500  hdg 275°		MZB R-255		CCADE INT							
						REEBE INT I-UBR 6.5		CJJHI INT I-UBR 8.7		OKAIN INT I-UBR 12.2	
										VYDDA INT I-UBR 14.2	
		I-UBR 1.3		$\leq 3.50^\circ$ TCH 65		2000		2700		3600	
						275°				4000	
		5.2 NM		2.2 NM		3.5 NM		2 NM			
CATEGORY		A		B		C		D			
S-27		680-1		663 (700-1)		680-1 ³ / ₄		663 (700-1 ³ / ₄)			
C CIRCLING		820-1		803 (900-1)		840-2 ¹ / ₂ 823 (900-2 ¹ / ₂)		940-3 923 (1000-3)			