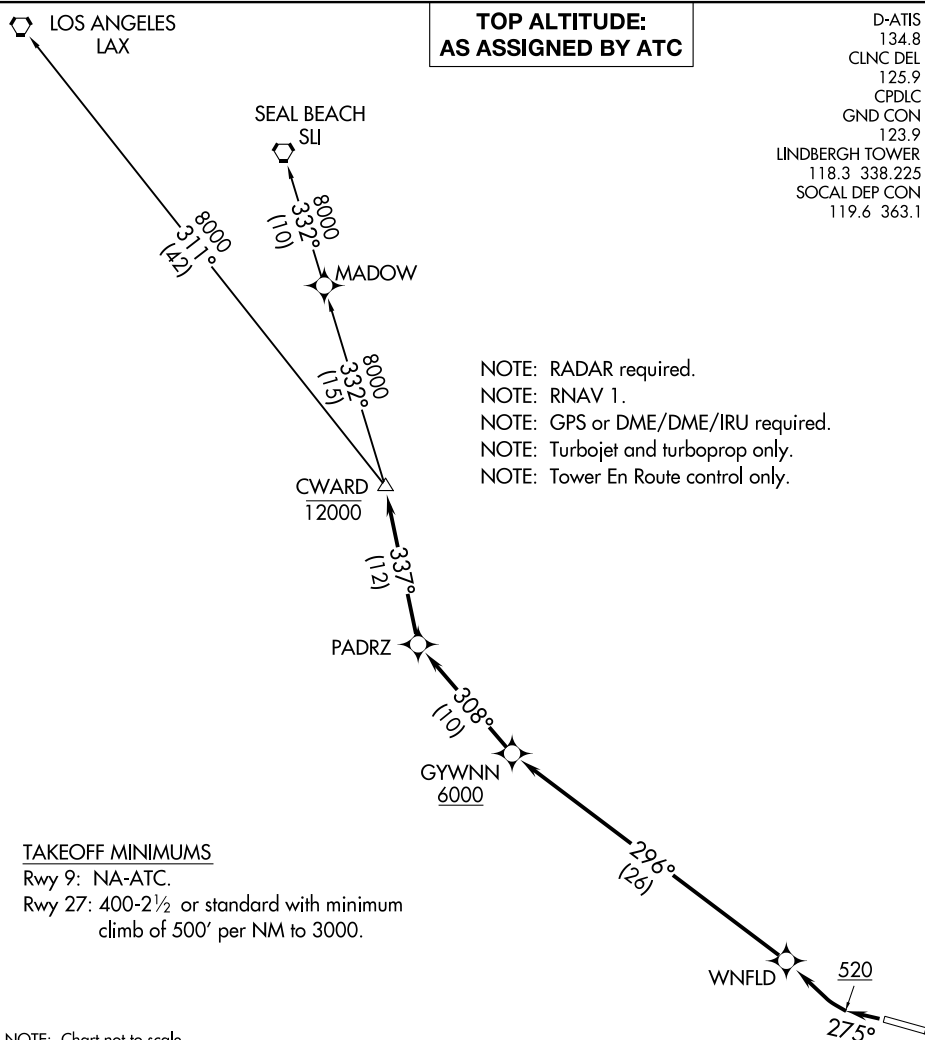


CWARD TWO DEPARTURE (RNAV)

SAN DIEGO INTL (SAN)
SAN DIEGO, CALIFORNIA



NOTE: Chart not to scale.

DEPARTURE ROUTE DESCRIPTION

TAKEOFF RUNWAY 27: Climb heading 275° to 520, then right turn direct WNFLD, then on track 296° to cross GYWNN at or above 6000, then on track 308° to PADRZ, then on track 337° to cross CWARD at or below 12000, thence. . . .on transition. Maintain ATC assigned altitude. Expect filed altitude 10 minutes after departure.

LOS ANGELES TRANSITION (CWARD2.LAX)
SEAL BEACH TRANSITION (CWARD2.SLI)

D-ATIS	134.8
CLNC DEL	125.9
CPDLC	
GND CON	123.9
LINDBERGH TOWER	118.3 338.225
SOCAL DEP CON	119.6 363.1

CWARD TWO DEPARTURE (RNAV)
(CWARD2.CWARD) 07DEC17

SAN DIEGO, CALIFORNIA
SAN DIEGO INTL (SAN)

SW-3, 10 JUL 2025 to 07 AUG 2025