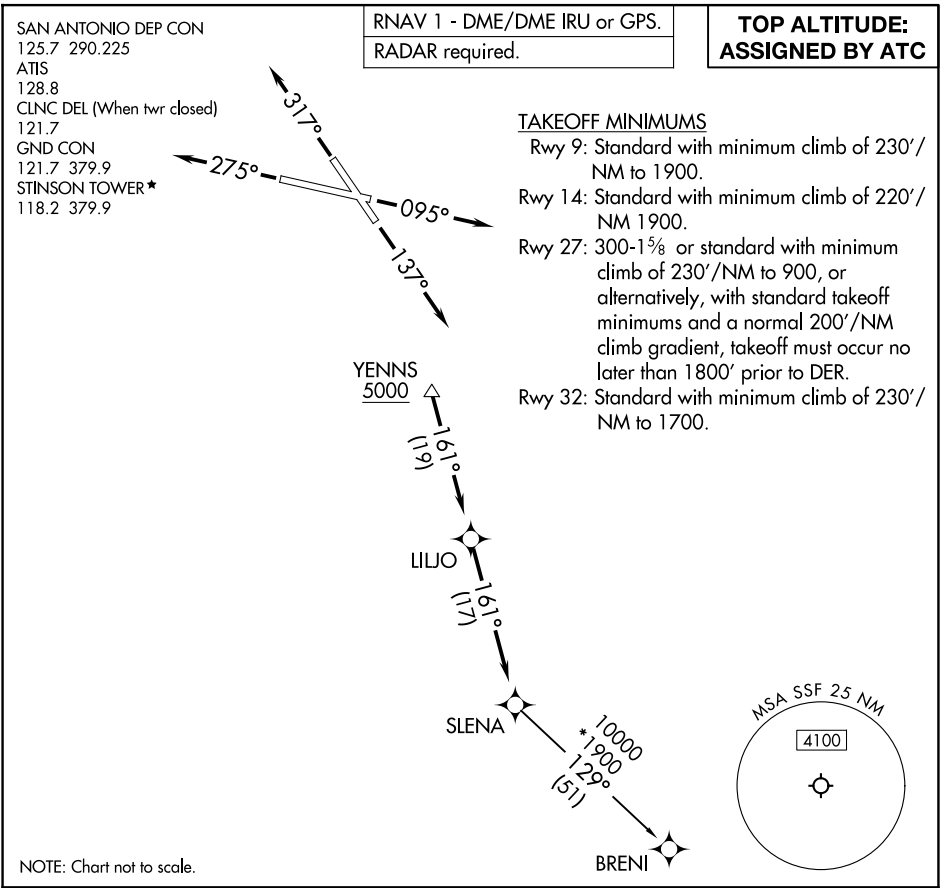


(SLENA1.SLENA) 24025

AL-372 (FAA)

STINSON MUNI (SSF)
SAN ANTONIO, TEXAS

SLENA ONE DEPARTURE (RNAV)



DEPARTURE ROUTE DESCRIPTION

TAKEOFF RUNWAY 9: Climb on heading 095° or as assigned by ATC, for vectors to YENNS, thence

TAKEOFF RUNWAY 14: Climb on heading 137° or as assigned by ATC, for vectors to YENNS, thence

TAKEOFF RUNWAY 27: Climb on heading 275° or as assigned by ATC, for vectors to YENNS, thence

TAKEOFF RUNWAY 32: Climb on heading 317° or as assigned by ATC, for vectors to YENNS, thence

. . . . on track 161° to LILJO, then on track 161° to SLENA, then on transition.

Maintain ATC assigned altitude.

BRENI TRANSITION (SLENA1.BRENI)