

APP CRS 332°	Rwy Idg TDZE Apt Elev	3530 571 578
------------------------	-----------------------------	---

RNAV (GPS) RWY 32
STINSON MUNI (SSF)

RNP APCH-GPS.

T Rwy 32 helicopter visibility reduction below 1 SM NA. Straight-in Rwy 32 NA at night, Circling Rwy 9, 14, and 32 NA at night.

MISSED APPROACH: Climb to 4100 direct KONLE and on track 289° to KICED and hold.

ATIS 128.8	SAN ANTONIO APP CON 125.7 290.225	STINSON TOWER ★ 118.2 (CTAF) 379.9	GND CON 121.7 379.9	CLNC DEL 121.7 (When twr closed)	UNICOM 122.95
----------------------	---	--	-------------------------------	---	-------------------------

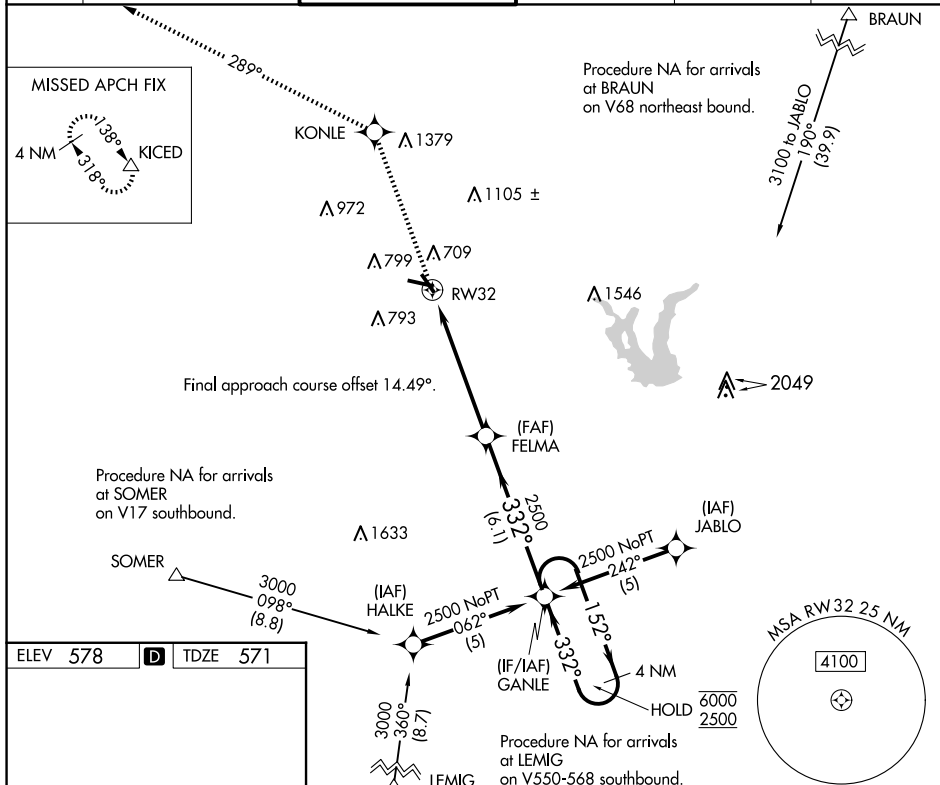


Diagram illustrating the RW32 approach procedure. Key features include:

- 332° heading
- 5000 X 100 obstacle clearance
- 4128 X 100 obstacle clearance
- 0.3% UP slope
- 5.6 NM distance to the runway
- 6.1 NM distance to the holding pattern
- 4 NM holding pattern
- RW32 runway
- 3.23° TCH 40 glide slope