
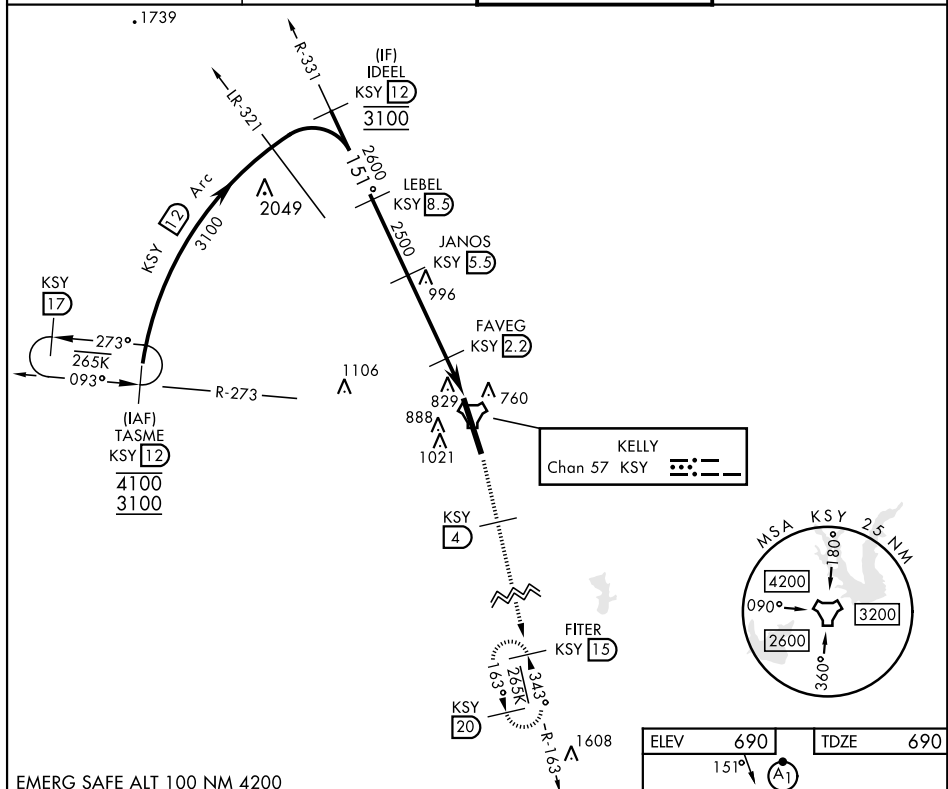


TACAN Y RWY 16

TACAN KSY Chan 57	APCH CRS 151°	Rwy Idg 11,550 TDZE 690 Arpt Elev 690	AL-371 [USAF]	KELLY FLD (KSKF)
▼ * When ALS inop, increase CAT AB RVR to 55 and vis to 1 mile, CAT CDE RVR to 60 and vis to 1½ miles. ** Circling not authorized E of Rwy 16-34.			ALSF-1 	MISSED APPROACH: Climb on 2500 via KSY R-163 until 4 DME, then climb to 3000 to FITER/ 15 DME and hold.
ATIS 120.45 273.5		SAN ANTONIO APP CON 118.05 353.5	TOWER 124.3 322.35	GND CON 121.8 289.4



EMERG SAFE ALT 100 NM 4200

