

WAAS CH 65364 W34A	APCH CRS 338°	Rwy ldg TDZE Arprt Elev	11,550 660 690
--------------------------	------------------	-------------------------------	----------------------

AL-371 (USAF)

KELLY FLD (KSKF)

RNP APCH

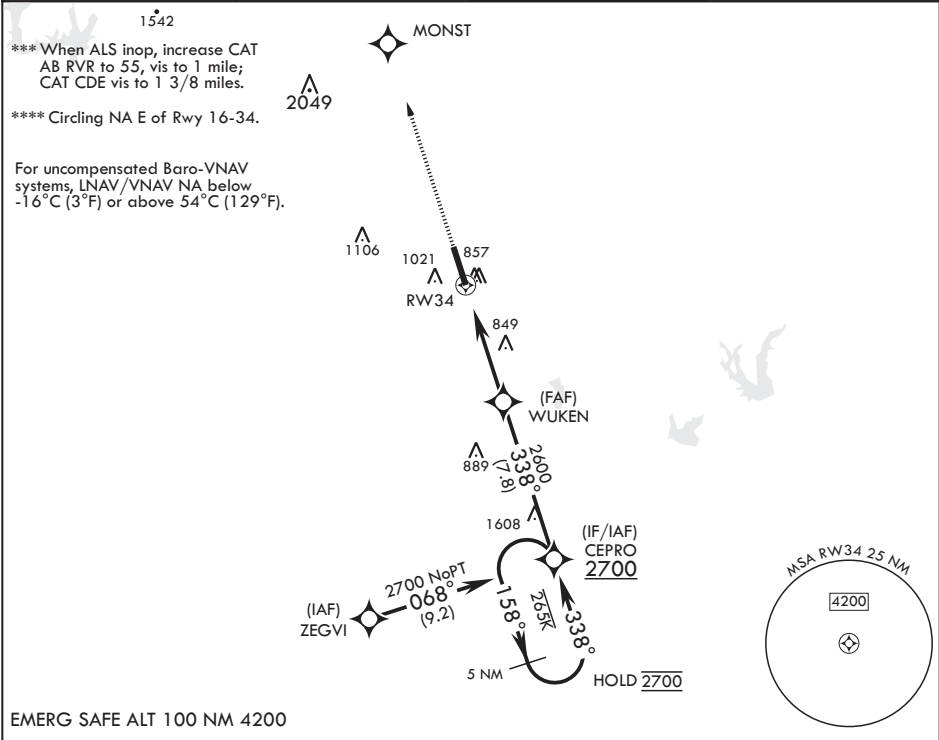
▼ * When ALS inop, increase RVR to 40, vis to 3/4 miles.
** When ALS inop, increase vis to 1 3/8 miles.

ALSF-1



MISSED APPROACH: Climb to 3000 direct MONST. Expect ATC instructions.

ATIS 120.45 273.5	SAN ANTONIO APP CON 118.05 353.5	KELLY TOWER 124.3 322.35	GND CON 121.8 289.4
----------------------	-------------------------------------	-----------------------------	------------------------



3000	MONST	VGSI and descent angles not coincident (VGSI Angle 3.02/TCH 93).	CEPRO	158°	5 NM Holding Pattern	ELEV 690	TDZE 660
↑	✧						
			WUKEN	338°	2700		
			RW34	1.1 NM to RW34	2600		
				5.8 NM			
CATEGORY	A	B	C	D	E		
LPV DA*		860/24	200		(200-½)		
LNAV/VNAV DA**		1120/45	460		(500-¾)		
LNAV MDA***		1120/24 460 (500-½)	1120/45 460 (500-¾)				
☐ CIRCLING****	1200-1 510 (600-1)	1280-1 590 (600-1)	1340-1½ 650 (700-1¼)	1400-2½ 710 (800-2¼)	1900-3 1210 (1300-3)		

BCN

GP 3.00°
TCH 60

707

TWR 780

11.500 x 150

0-0.5% UP

855

727

34

338°

HIRL all Rwys