

WAAS CH 52296 W16A	APCH CRS 158°	Rwy ldg TDZE Arpt Elev	11,550 690 690
--------------------------	------------------	------------------------------	----------------------

AL-371 (USAF)

KELLY FLD (KSKF)

RNP APCH

▲ * When ALS inop, increase RVR to 40, vis to 3/4 miles.
** When ALS inop, increase RVR to 60, vis to 1 1/8 miles.

ALSF-1



MISSED APPROACH: Climb to 1500 then climbing right turn to 3000 direct FITER and hold.

ATIS 120.45 273.5	SAN ANTONIO APP CON 118.05 353.5	KELLY TOWER 124.3 322.35	GND CON 121.8 289.4
----------------------	-------------------------------------	-----------------------------	------------------------

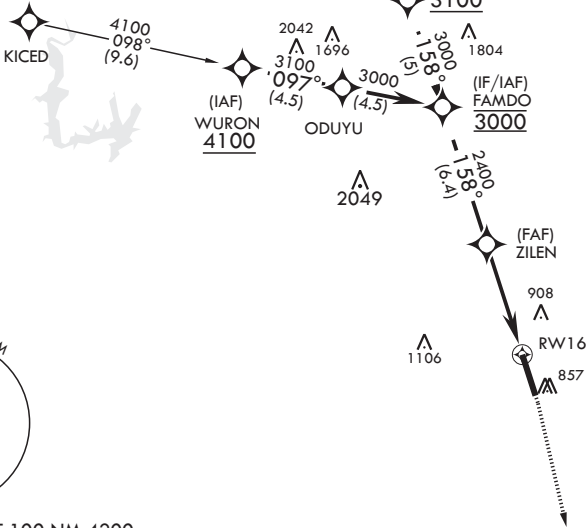
*** When ALS inop, increase CAT AB RVR to 55, and vis to 1 mile; CAT CDE vis to 1 7/8 miles.

**** Circling not authorized E of Rwy 16-34.

1985

REUBE

For uncompensated
BARO-VNAV systems,
LNAV/VNAV NA below -16°C
(3°F) or above 54°C (129°F).



EMERG SAFE ALT 100 NM 4200

FAMDO

3000

GP 3.00°
TCH 57

158°

ZILEN

2400

1.8 NM to RW16

5.1 NM

RW16

1500

3000

FITER

ELEV 690

TDZE 690

158°

707

TWR 780

727

BCN

855

34

HIRL all Rwys

VGSI and descent angles not coincident (VGSI Angle 3.01/TCH 89).

1500

3000

FITER

ELEV 690

TDZE 690

158°

707

TWR 780

727

BCN

855

34

HIRL all Rwys

CATEGORY	A	B	C	D	E
LPV DA*	890/24	200	(200-½)		
LNAV/VNAV DA**	1080/35	390	(400-¾)		
LNAV MDA***	1360/24 670 (700-½)	1360-1½ 670 (700-1½)			
CIRCLING****	1360-1 670 (700-1)	1360-1½ 670 (700-1½)	1400-2¼ 710 (800-2¼)	1900-3 1210 (1300-3)	

SC-3, 10 JUL 2025 to 07 AUG 2025

SC-3, 10 JUL 2025 to 07 AUG 2025