

ILS or LOC/DME Y RWY 34

LOC I-OSQ <u>110.7</u>	APCH CRS 338°	Rwy Idg 11,550 TDZE 660 Arpt Elev 690
----------------------------------	-------------------------	------------------------------------------------------------------

[USAF]

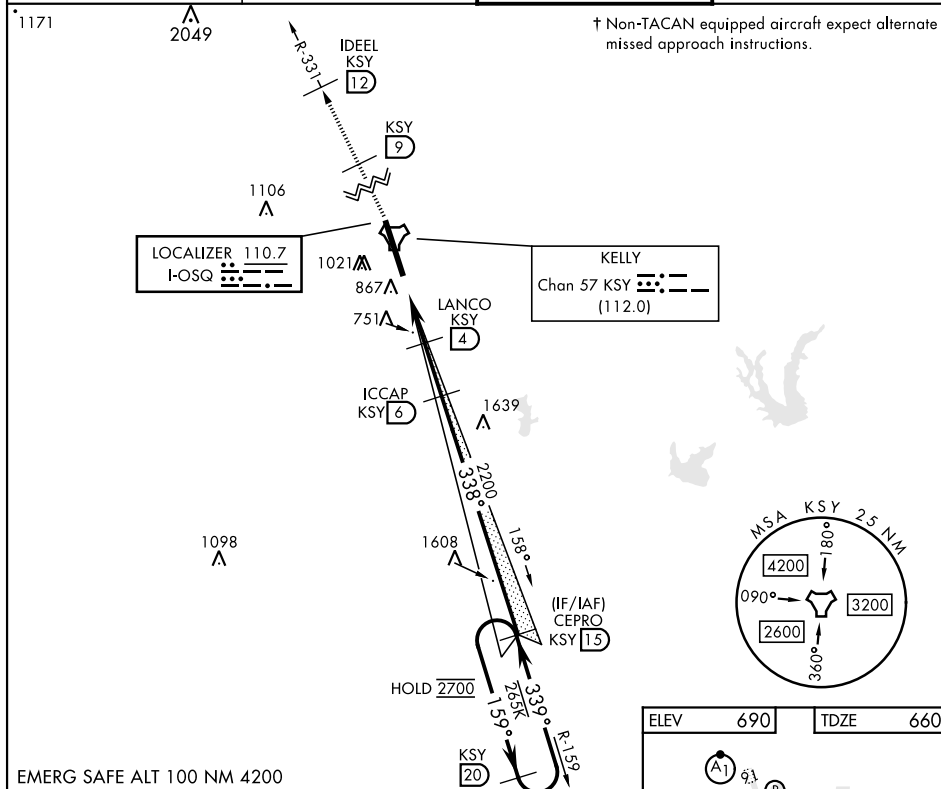
KELLY FLD (KSKF)

T * When ALS inop, increase RVR to 40 and vis to $\frac{3}{4}$ mile.
 ** When ALS inop, increase RVR to 55 and vis to 1 mile.
 *** Circling not authorized E of Rwy 16-34.

ALSF-1

† MISSED APPROACH: Climb to 2500 via KSY
TACAN R-331 until 9 DME, cross 9 DME at 2500,
then continue climb to 3000 to IDEEL/12 DME.
Expect ATC instructions.

ATIS 120.45 273.5	SAN ANTONIO APP CON 118.05 353.5	TOWER 124.3 322.35	GND CON 121.8 289.4
-----------------------------	--------------------------------------------	------------------------------	-------------------------------



EMERG SAFE ALT 100 NM 4200

