

## ILS or LOC/DME Y RWY 16

LOC I-SKF <b><u>110.1</u></b>	APCH CRS <b>158°</b>	Rwy Idg <b>11,550</b> TDZE <b>690</b> Arpt Elev <b>690</b>
----------------------------------	-------------------------	--

[USAF]

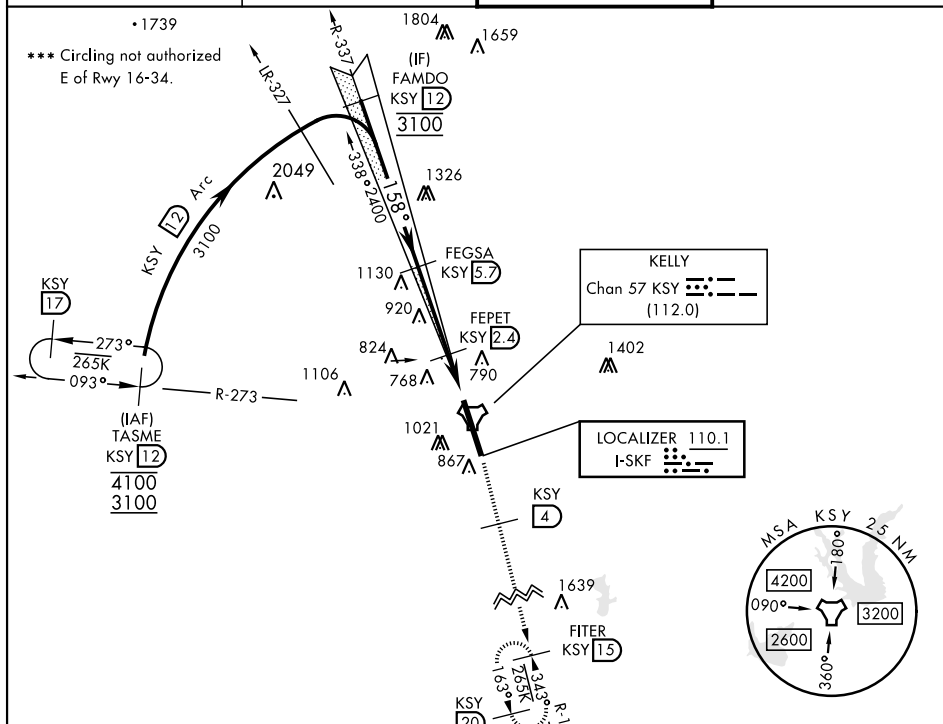
KELLY FLD (KSKF)

**T** \*When ALS inop, increase RVR to 40 and vis to ¾ mile.  
 \*\*When ALS inop, increase CAT AB RVR to 55 and vis to 1 mile, CAT CDE RVR to 60 and vis to 1 ½ miles.

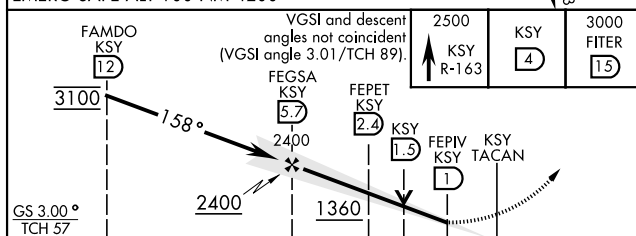
ALSF-1

**MISSED APPROACH:** Climb to 2500 via KSY R-163 until 4 DME, then continue climb to 3000 to FITER/15 DME and hold. Non-TACAN equipped aircraft expect alternate missed approach instructions.

ATIS 120.45 273.5	SAN ANTONIO APP CON 118.05 353.5	TOWER 124.3 322.35	GND CON 121.8 289.4
----------------------	-------------------------------------	-----------------------	------------------------



EMERG SAFE ALT 100 NM 4200



CATEGORY	A	B	C	D	E
S-ILS 16 *	890/24		200	(200-½)	
S-LOC/DME 16 **	1080/24 390 (400-½)		1080/35 390 (400-¾)		
<b>CIRCLING</b> ***	1200-1 510 (600-1)	1280-1 590 (600-1)	1340-1¾ 650 (700-1¾)	1900-3 1210 (1300-3)	

