

HI-TACAN Z RWY 16

TACAN KSY  
Chan 57

APCH CRS  
151°

Rwy Ldg 11,550  
TDZE 690  
Arpt Elev 690

[USAF]

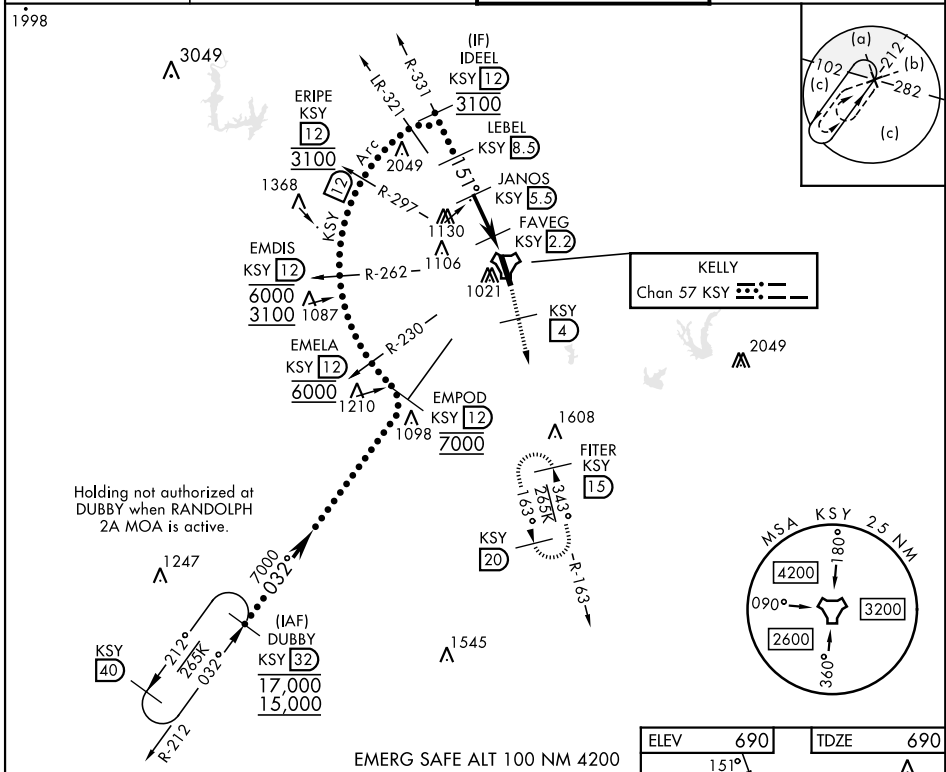
KELLY FLD (KSKF)

✦ \* When ALS inop, increase RVR to 60 and vis to 1½ miles.  
\*\* Circling not authorized E of Rwy 16-34.

ALSF-1  
(A1)

MISSED APPROACH: Climb to 2500 via KSY TACAN R-163 until 4 DME, then continue climb to 3000 to FITER/15 DME and hold.

ATIS 120.45 273.5	SAN ANTONIO APP CON 118.05 353.5	TOWER 124.3 322.35	GND CON 121.8 289.4
----------------------	-------------------------------------	-----------------------	------------------------



VGSI and descent angles not coincident (VGSI angle 3.01/TCH 89).

2500 KSY R-163

3000 FITER KSY 15

IDEEL R-331 KSY 12 3100

LEBEL KSY 8.5

JANOS KSY 5.5

FAVEG KSY 2.2

FAVLA KSY 1.6

KSY TACAN

1360

2500

2600

157°

3.3 NM

1.2 NM

0.5 NM

CATEGORY	C	D	E
S-16*	1100/40	410	(500-34)
CIRCLING**	1340-134 650 (700-134)	1900-3 1210 (1300-3)	

ELEV 690

TDZE 690

151°

93°

707

TWR 780

727

857

713

34

(A1)

HIRL Rwy 16-34

HI-TACAN Z RWY 16