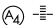
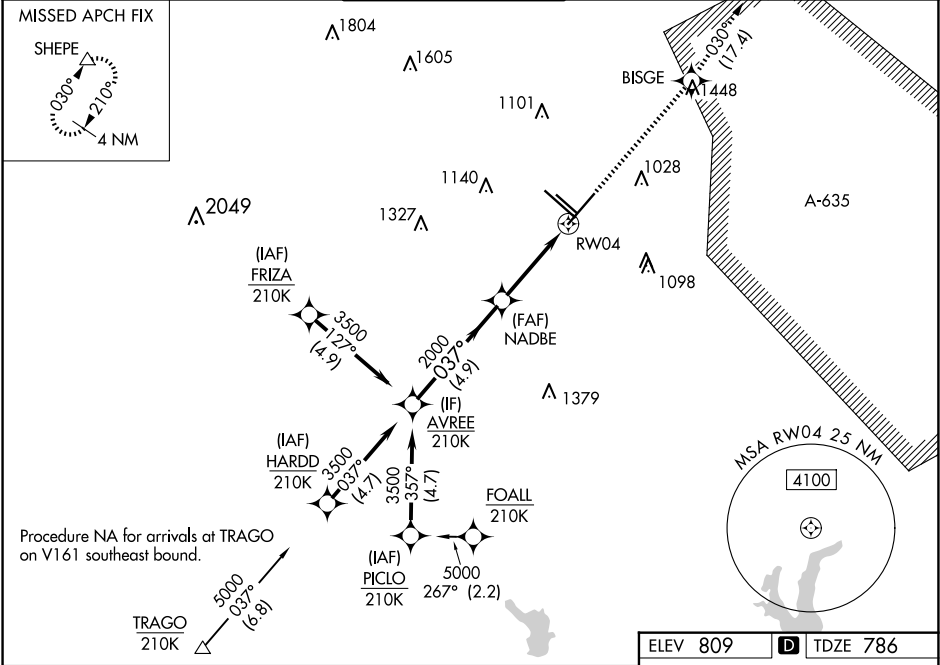
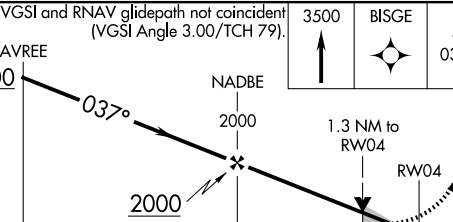


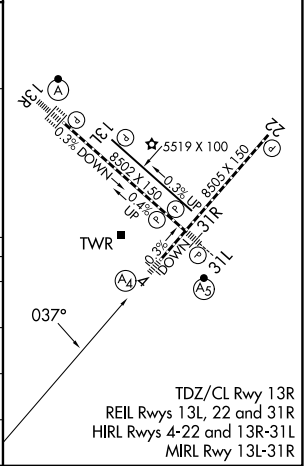
WAAS CH 77613 W04A	APP CRS 037°	Rwy Ldg TDZE 786 Apt Elev 809
--	------------------------	---

RNAV (GPS) Y RWY 4
SAN ANTONIO INTL (SAT)

RNP APCH - GPS.			MALSS 	MISSED APPROACH: Climb to 3500 direct BISGE and track 030° to SHEPE and hold.	
<p>▼ Circling NA northwest of Rwy 4 and 13R. Inop table does not apply to LPV. For uncompensated Baro-VNAV systems, LNAV/VNAV NA below -5°C or above 54°C. For inop ALS, increase LNAV/VNAV all Cats visibility to RVR 6000. Increase LNAV Cats A/B visibility to RVR 5500 and LNAV Cats C/D visibility to 1% SM.</p>					
D-ATIS 118.9	SAN ANTONIO APP CON 125.1 307.0	SAN ANTONIO TOWER 119.8 257.8	GND CON 121.9 348.6	CLNC DEL 126.7	CPDLC



VGSI and RNAV glidepath not coincident (VGSI Angle 3.00/TCH 79).				
				
GP 3.00° TCH 56				
CATEGORY	A	B	C	D
LPV DA	986/40		200 (200-¾)	
LNAV/VNAV DA	1201/50		415 (400-1)	
LNAV MDA	1280/40	494 (500-¾)	1280/60	494 (500-1¼)
CIRCLING	1280-1 471 (500-1)	1340-1 531 (600-1)	1420-1¾ 611 (700-1¾)	1520-2¼ 711 (800-2¼)



SC-3, 10 JUL 2025 to 07 AUG 2025

SC-3, 10 JUL 2025 to 07 AUG 2025