

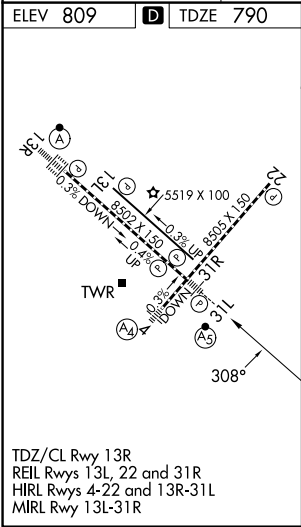
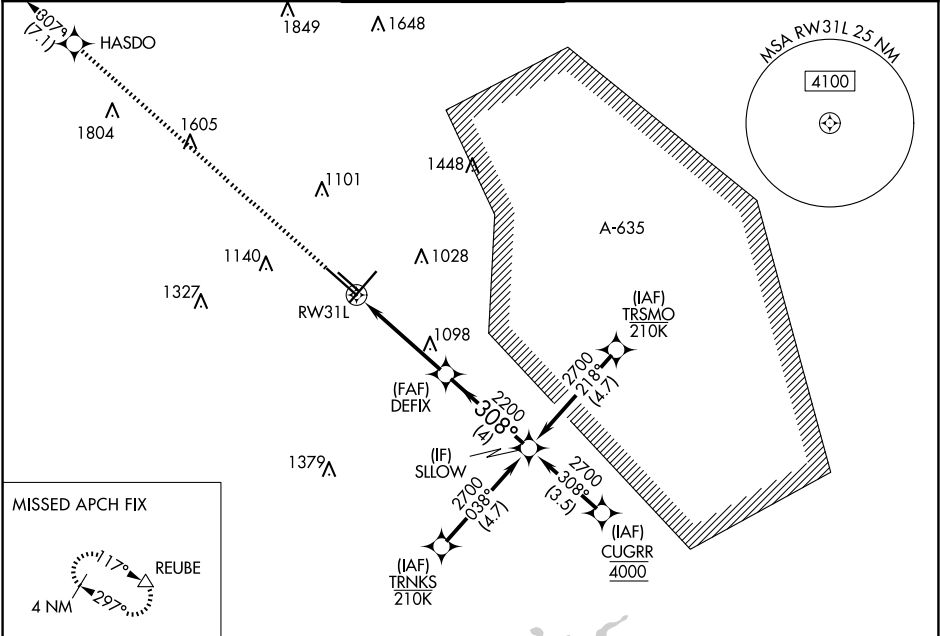





WAAS CH <b>61209</b> <b>W31A</b>	APP CRS <b>308°</b>	Rwy Ldg TDZE <b>790</b> Apt Elev <b>809</b>
--	------------------------	---

RNAV (GPS) Y RWY 31L

SAN ANTONIO INTL (SAT)

RNP APCH - GPS.			<div>MALSR</div> <div></div>	MISSED APPROACH: Climb to 4200 direct HASDO and track 307° to REUBE and hold.	
<div><div></div><div>For uncompensated Baro-VNAV systems, LNAV/VNAV NA below -5°C or above 54°C. Circling NA northwest of Rwy's 4 and 13R. * RVR 1800 authorized with use of FD or AP or HUD to DA.</div></div>					
D-ATIS 118.9	SAN ANTONIO APP CON 125.1 307.0	SAN ANTONIO TOWER 119.8 257.8	GND CON 121.9 348.6	CLNC DEL 126.7	CPDLC



<div><div><div>2049</div><div>△</div></div></div>				
4200 ↑	HASDO 	tr 307°	REUBE △	VGSI and RNAV glidepath not coincident (VGSI Angle 3.00/TCH 82).
SLOW				
<div><div><div><div><div>RW31L</div><div></div></div></div><div><div>1.5 NM to RW31L</div><div>↓</div></div><div><div>DEFIX 2200</div><div></div></div><div><div>2700</div><div>↗</div></div><div><div>308°</div><div>↖</div></div><div><div>2200</div><div>↘</div></div><div><div>GP 3.00°</div><div>TCH 60</div></div></div></div>				
<div><div>1.5 NM</div><div>2.8 NM</div><div>4 NM</div></div>				
CATEGORY	A	B	C	D
LPV DA *	990/24		200 (200-½)	
LNAV/VNAV DA	1220/40		430 (500-¾)	
LNAV MDA	1360/24	570 (600-½)	1360/60	570 (600-1¼)
CIRCLING	1360-1	551 (600-1)	1420-1¾ 611 (700-1¾)	1520-2¼ 711 (800-2¼)