

25163

WAAS CH 69430 W22A	APP CRS 217°	Rwy Ldg 8505 TDZE 770 Apt Elev 809
--	------------------------	---

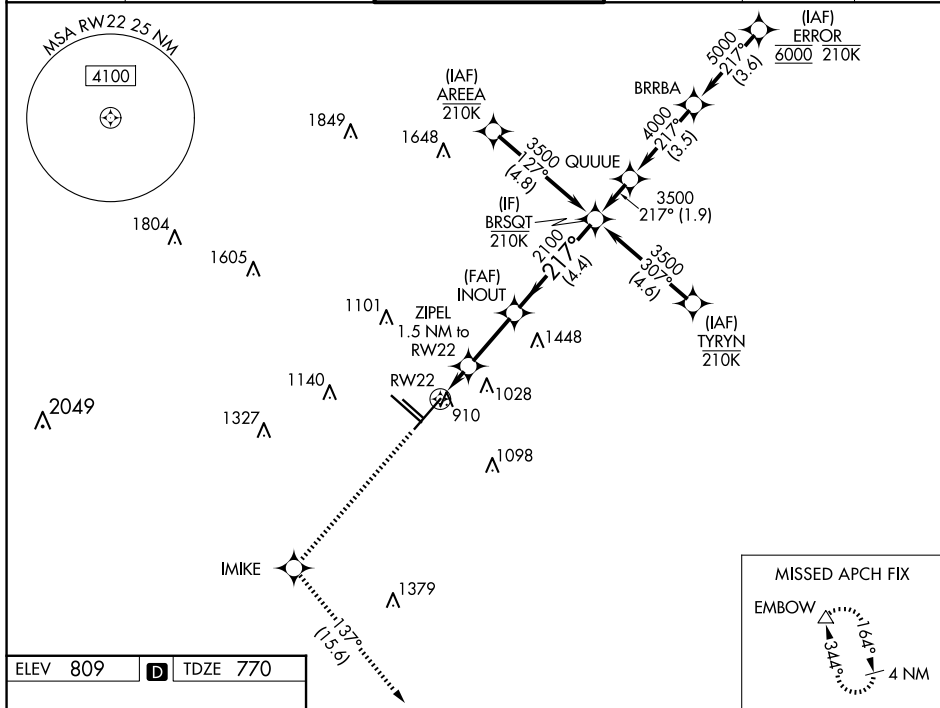
RNAV (GPS) Y RWY 22
SAN ANTONIO INTL (SAT)

RNP APCH - GPS.

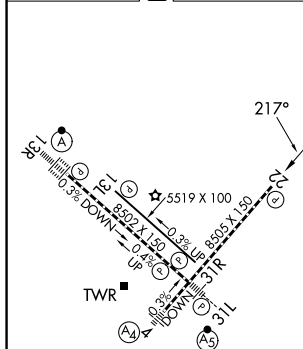
T Circling NA northwest of Rwy 4 and 13R. For uncompensated Baro-VNAV systems,
A LNAV/VNAV NA below -5°C or above 54°C.

MISSED APPROACH: Climb to 3100 direct **IMIKE** and on track 137° to **EMBOW** and hold.

D-ATIS 118.9	SAN ANTONIO APP CON 125.1 307.0	SAN ANTONIO TOWER 119.8 257.8	GND CON 121.9 348.6	CLNC DEL 126.7	CPDLC
------------------------	---	---	-------------------------------	--------------------------	-------



ELEV 809	D	TDZE 770
----------	----------	----------



TDZ/CL Rwy 13R
REIL Rwy 13L, 22 and 31R
HIRL Rwy 4-22 and 13R-31L
MIRL Rwy 13L-31R

3100
↑

IMIKE
✦

tr 137°

EMBOW
△

VGSB and RNAV glidepath not coincident (VGSB Angle 3.00/TCH 85).

RW22

ZIPEL
1.5 NM to RW22

INOUT
2100

BRSQT
3500

217°

2100

1300

GP 3.00°
TCH 55

1.5 NM

2.5 NM

4.4 NM

CATEGORY	A	B	C	D
LPV DA	970-3/4		200 (200-3/4)	
RNAV/ VNAV DA	1220-1 3/8		450 (500-1 3/8)	
RNAV MDA	1220-1	450 (500-1)	1220-1 3/8	450 (500-1 3/8)
CIRCLING	1280-1 471 (500-1)	1340-1 531 (600-1)	1420-1 3/4 611 (700-1 3/4)	1520-2 1/4 711 (800-2 1/4)

SAN ANTONIO, TEXAS
Amdt 3 25JAN24

29°32'N-98°28'W

SAN ANTONIO INTL (SAT)

RNAV (GPS) Y RWY 22

SC-3, 10 JUL 2025 to 07 AUG 2025