

SAN ANTONIO, TEXAS

AL-369 (FAA)

25163

WAAS CH 82409 W13A	APP CRS 128°	Rwy Ldg 8502 TDZE 809 Apt Elev 809
--	------------------------	---

RNAV (GPS) Y RWY 13R
SAN ANTONIO INTL (SAT)

RNP APCH - GPS.

T Circling NA northwest of Rwy 4 and 13R. For uncompensated Baro-VNAV systems, LNAV/VNAV NA below -5°C or above 54°C. For inop ALS, increase LNAV/VNAV all Cats visibility to RVR 6000 and LNAV Cats C and D visibility to 1½ SM.

ALSF-2



D-ATIS 118.9	SAN ANTONIO APP CON 125.1 307.0	SAN ANTONIO TOWER 119.8 257.8	GND CON 121.9 348.6	CLNC DEL 126.7	CPDLC
-----------------	------------------------------------	----------------------------------	------------------------	-------------------	-------

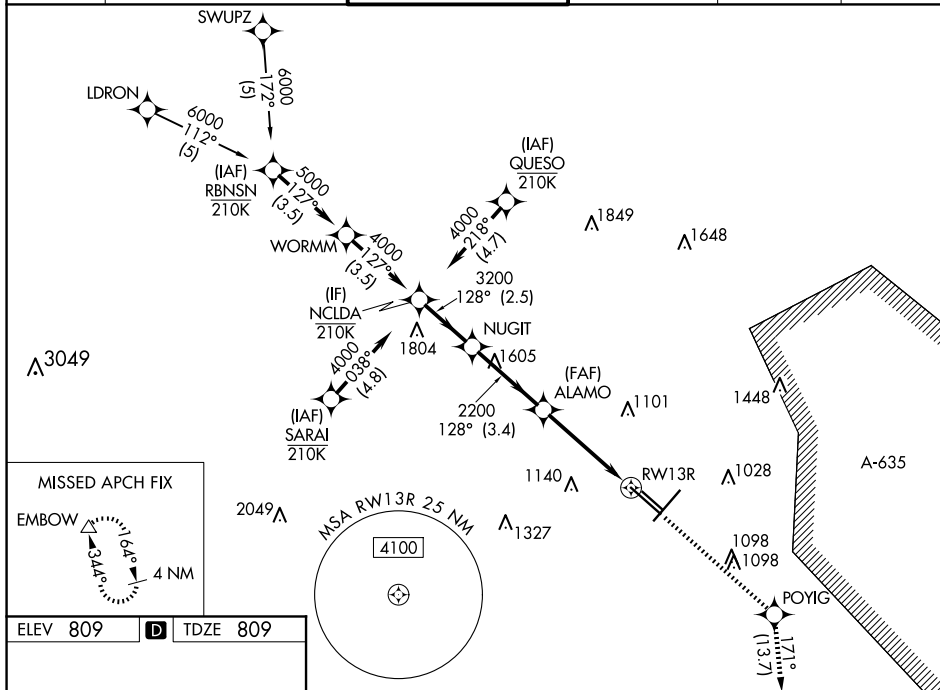


Figure 1-1 illustrates a 4th step RNAV (LNAV) approach. The diagram shows a 128° heading, a 3100 ft POYIG, and a 171° EMBOW. The approach includes a 4000 ft NCLDA, a 3200 ft NUGIT, and a 2200 ft ALAMO. The approach is for RW13R, with a 1.9 NM distance to the runway. The approach is for a 4th step RNAV (LNAV) approach, with a 3100 ft POYIG and a 171° EMBOW. The approach includes a 4000 ft NCLDA, a 3200 ft NUGIT, and a 2200 ft ALAMO. The approach is for RW13R, with a 1.9 NM distance to the runway.

SAN ANTONIO, TEXAS

Amdt 2 25JAN24

SAN ANTONIO INTL (SAT)

29°32'N-98°28'W

RNAV (GPS) Y RWY 13R