

APP CRS	Rwy Ldg	8505
037°	TDZE	786
	Apt Elev	809

RNAV (RNP) Z RWY 4
SAN ANTONIO INTL (SAT)

RNP AR APCH - GPS

T For uncompensated Baro-VNAV systems, procedure NA below -5°C or above 54°C.

MALS



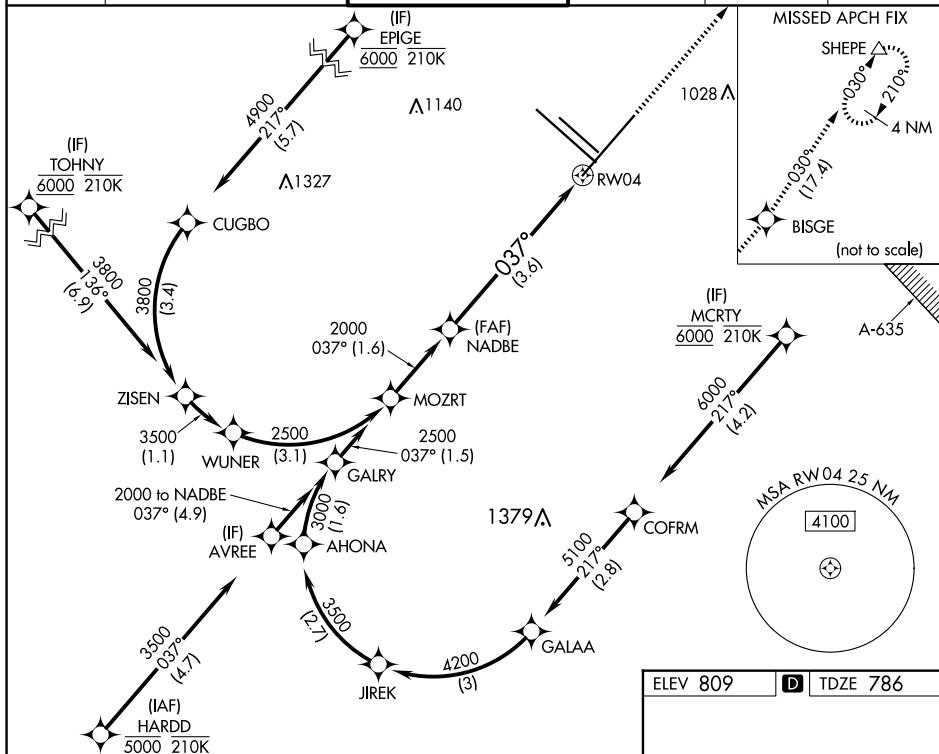
MISSED APPROACH: Climb to 3500 direct BISGE and track 030° to SHEPE and hold.

D-ATIS
118.9

SAN ANTONIO APP CON
125.1 307.0

119.8 257.8

GND CON
121.9 348.6

CLNC DEL
126.7

VGSI and RNAV glidepath not coincident
(VGSI Angle 3.00/TCH 79).

NADBE

1

3500

BISGF

--	--

SHEPE

See planview for multiple IF locations.

2000'

GP 3.00°
TCH 56

370.

RW04

A schematic diagram of a single nanowire. It is represented as a horizontal rectangle. Below the rectangle, a double-headed arrow indicates the length, which is labeled as 3.6 μm.

CATEGORY	A	B	C	D
RNP 0.15 DA		1167/45	381 (400-7%)	
RNP 0.30 DA		1286/60	500 (500-1¼)	

AUTHORIZATION REQUIRED

