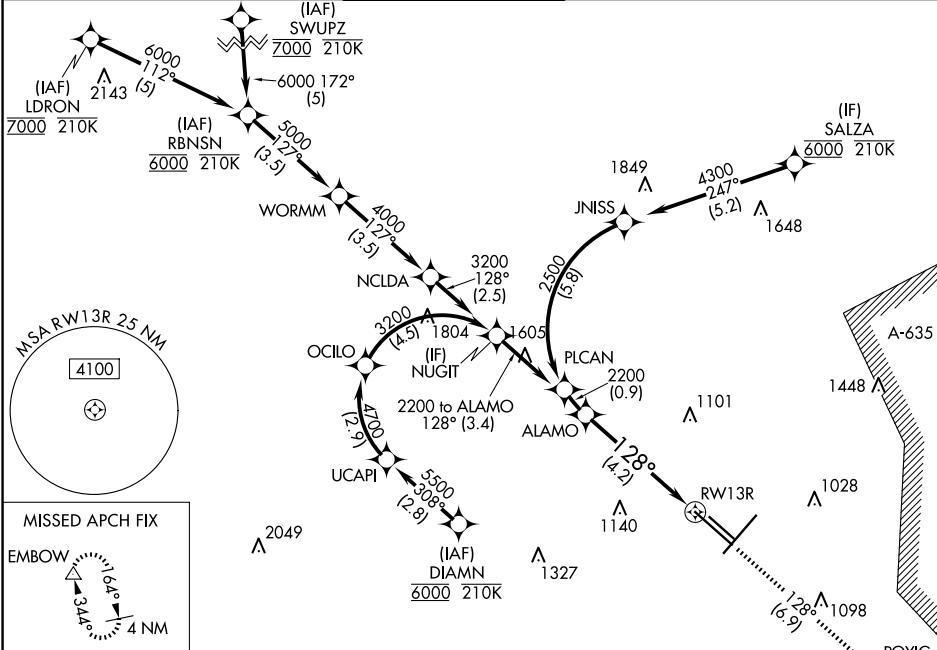


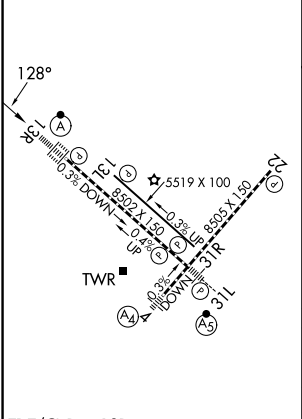
APP CRS	Rwy Ldg	8502
128°	TDZE	809
	Apt Elev	809

RNAV (RNP) Z RWY 13R
SAN ANTONIO INTL (SAT)

RNP AR APCH - GPS.			ALSIF-2	MISSED APPROACH: (Do not exceed 210K until POYIG) Climb to 3100 on track 128° to POYIG and track 171° to EMBOW and hold.	
For uncompensated Baro-VNAV systems, procedure NA below -5°C or above 54°C. For inop ALS, increase RNP 0.3 all Cats visibility to RVR 6000.					
D-ATIS	SAN ANTONIO APP CON	SAN ANTONIO TOWER	GND CON	CLNC DEL	CPDLC
118.9	125.1 307.0	119.8 257.8	121.9 348.6	126.7	



ELEV 809	D	TDZE 809
----------	---	----------



VGSI and RNAV glidepath not coincident (VGSI Angle 3.00/TCH 75).				3100	POYIG	tr 171°	EMBOW
				tr 128°			
				See planview for multiple IF locations.			
ALAMO 2200							
2200							
GP 3.00°							
TCH 58							
				RWY 13R			
				4.2 NM			
CATEGORY	A	B	C	D			
RNP 0.15 DA		1137/26	328 (400-½)				
RNP 0.30 DA		1218/40	409 (500-¾)				

TDZ/CL Rwy 13R
REIL Rwy 13L, 22 and 31R
HIRL Rwy 4-22 and 13R-31L
MIRL Rwy 13L-31R

SC-3, 10 JUL 2025 to 07 AUG 2025

SC-3, 10 JUL 2025 to 07 AUG 2025