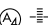



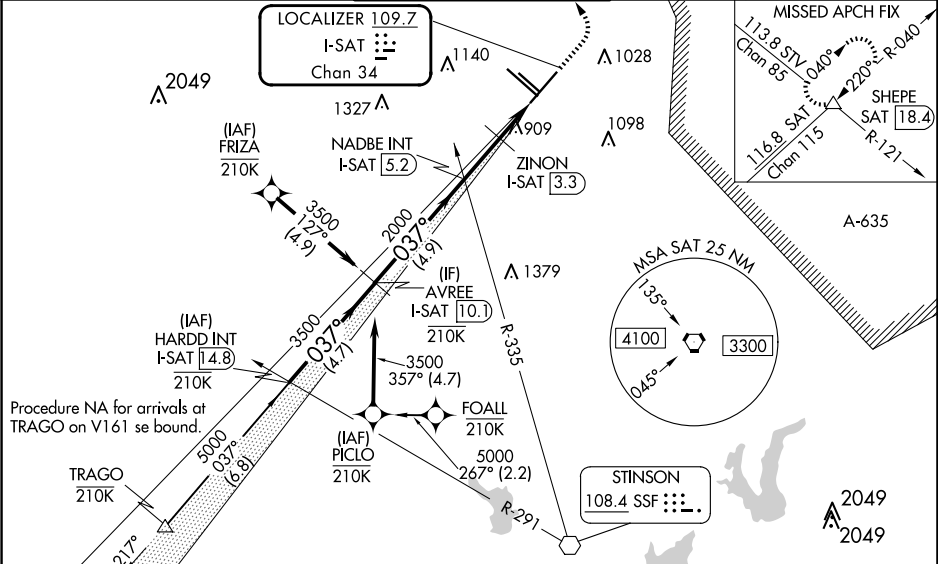
LOC/DME I-SAT	APP CRS	Rwy Ldg	8505
109.7	037°	TDZE	786
Chan 34		Apt Elev	809

ILS or LOC RWY 4

SAN ANTONIO INTL (SAT)

RNP APCH-GPS. From TRAGO or PICLO or FRIZA.		MALS 	MISSED APPROACH: Climb to 1700 then climbing left turn to 3500 on heading 025° and on SAT VORTAC R-040 to SHEPE INT/SAT 18.4 DME and hold.
Aircraft not GPS equipped - RADAR required for procedure entry.			
 NA	Circling NA northwest of Rwy's 4 and 13R. Autopilot coupled approach NA below 1189. Inop table does not apply to S-ILS 4. For inop ALS, increase S-LOC 4 Cat C/D visibility to RVR 6000.		

D-ATIS 118.9	SAN ANTONIO APP CON 125.1 307.0	SAN ANTONIO TOWER 119.8 257.8	GND CON 121.9 348.6	CLNC DEL 126.7	CPDLC
-----------------	------------------------------------	----------------------------------	------------------------	-------------------	-------



VGSi and ILS glidepath not coincident (VGSi Angle 3.00/TCH 79).					ELEV 809	D	TDZE 786
HARDD INT I-SAT 14.8		AVREE I-SAT 10.1		1700	3500	SAT R-040	SHEPE \triangle
5000		037°		NADBE INT I-SAT 5.2	ZINON I-SAT 3.3	See planview for multiple IF locations.	
GS 3.00° TCH 56		3500		2000	1200	I-SAT 2.4 I-SAT 1.6	
4.7 NM		4.9 NM		1.9 NM	0.9 NM	0.8 NM	
CATEGORY	A		B		C		D
S-ILS 4	986/40		200 (200-¾)				
S-LOC 4	1200/40	414 (400-¾)	1200/50		414 (400-1)		
C CIRCLING	1280-1 471 (500-1)	1340-1 531 (600-1)	1420-1¾ 611 (700-1¾)	1520-2¼ 711 (800-2¼)			
ZINON FIX MINIMUMS (DME REQUIRED)							
S-LOC 4	1120/40		334 (400-¾)				
C CIRCLING	1280-1 471 (500-1)	1340-1 531 (600-1)	1420-1¾ 611 (700-1¾)	1520-2¼ 711 (800-2¼)			
FAF to MAP 3.6 NM							
Knots		60	90	120	150	180	
Min:Sec		3:36	2:24	1:48	1:26	1:12	