

LOC/DME I-ANT <b>110.9</b> Chan <b>46</b>	APP CRS <b>128°</b>	Rwy 13R Ldg <b>8502</b> TDZE <b>809</b> Apt Elev <b>809</b>	Rwy 13L Ldg <b>5519</b> TDZE <b>797</b> Apt Elev <b>809</b>
---	------------------------	---	---

ILS or LOC RWY 13R  
SAN ANTONIO INTL (SAT)

RNP APCH-GPS. From LDRON, SWUPZ, SARAI, QUESO.

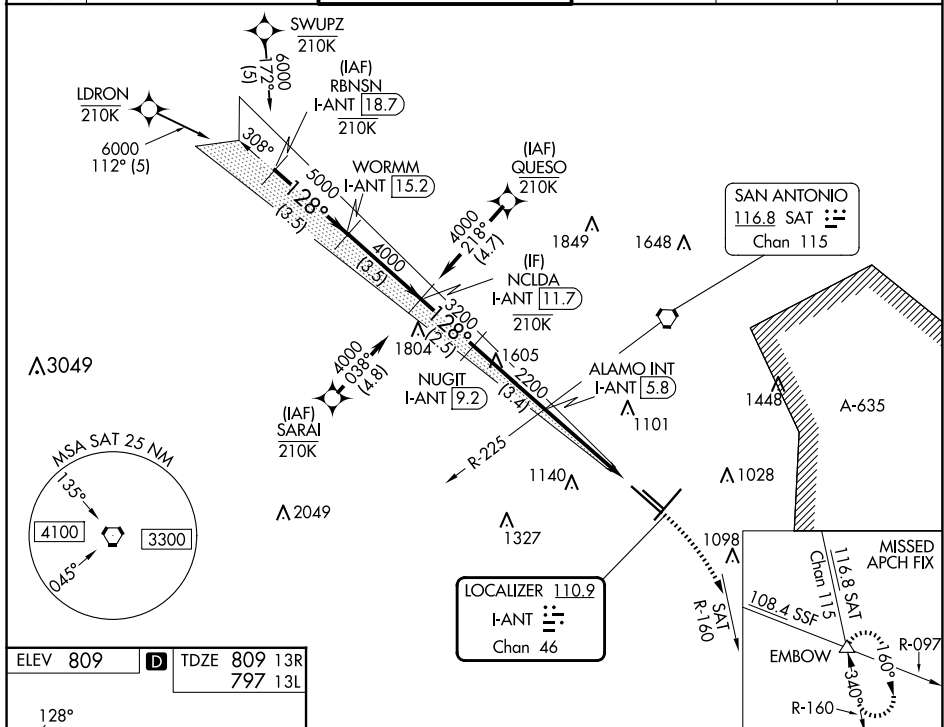
RNAV 1-GPS or RADAR required for procedure entry. DME required.

 Circling NA northwest of Rwy 4 and 13R.

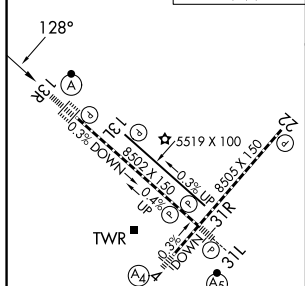
ALSF-2

**MISSED APPROACH:** Climb to 3100 on heading 128° and SAT VORTAC R-160 to EMBOW INT and hold.

D-ATIS 118.9	SAN ANTONIO APP CON 125.1 307.0	SAN ANTONIO TOWER 119.8 257.8	GND CON 121.9 348.6	CLNC DEL 126.7	CPDLC
-----------------	------------------------------------	----------------------------------	------------------------	-------------------	-------



ELEV 809	<b>D</b>	TDZE 809 13R 797 13L
----------	----------	-------------------------



TDZ/CL Rwy 13R  
REIL Rwys 13L, 22 and 31R  
HIRL Rwys 4-22 and 13R-31L  
MIRL Rwy 13L-31R

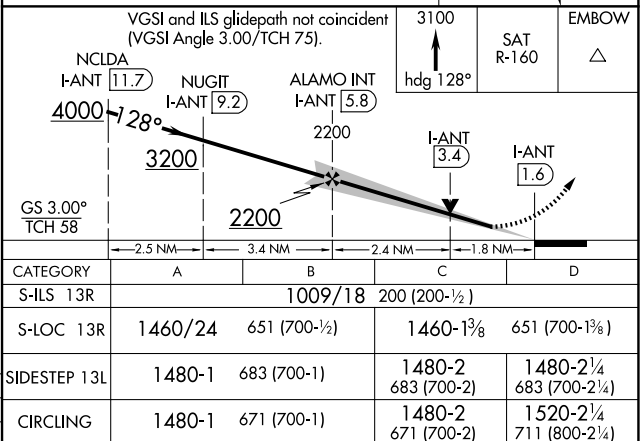
FAF to MAP 4.2 NM

Knots	60	90	120	150	180
Min:Sec	4:12	2:48	2:06	1:41	1:24

SAN ANTONIO, TEXAS

Amdt 15 25JAN24

29°32'N-98°28'W



SAN ANTONIO INTL (SAT)  
ILS or LOC RWY 13R