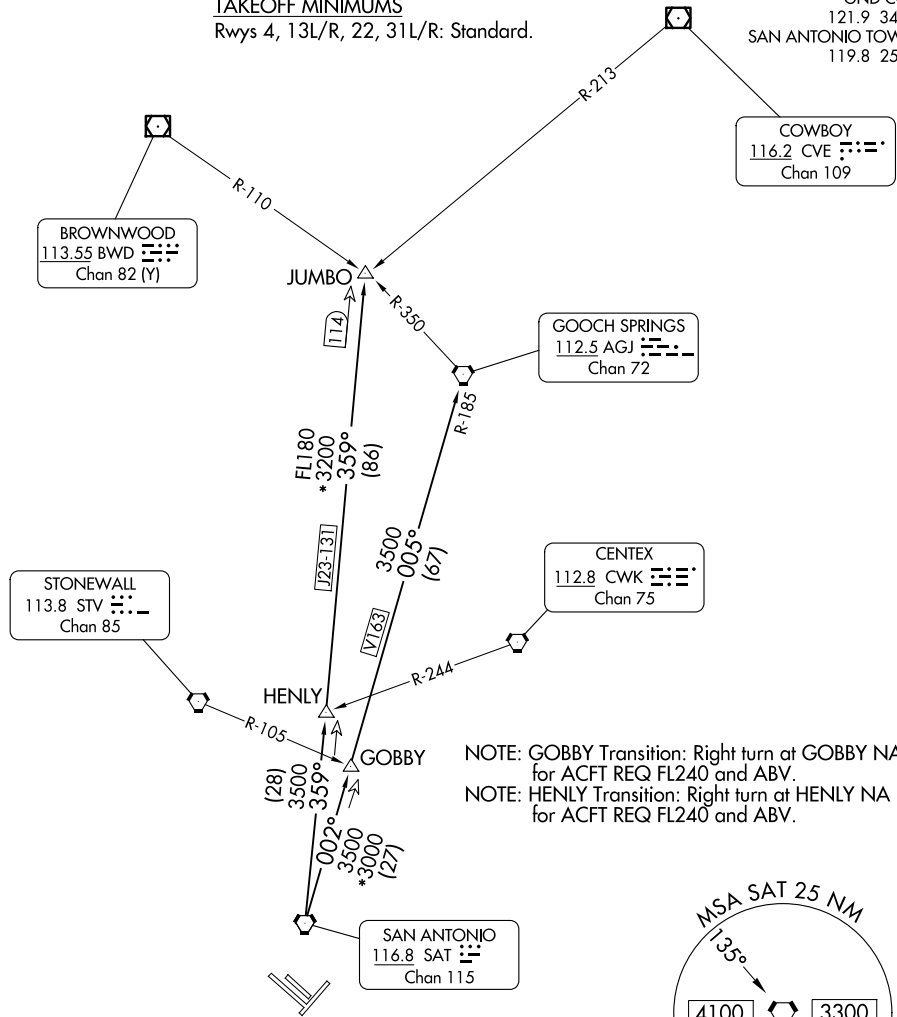


TOP ALTITUDE:
5000

RADAR required.

SAN ANTONIO DEP CON
125.1 307.0 (Rwys 04/22/31)
127.1 269.1 (Rwy 13)
D-ATIS 118.9
CLNC DEL 126.7
CPDLC 121.9
GND CON 121.9 348.6
SAN ANTONIO TOWER 119.8 257.8

TAKEOFF MINIMUMS
Rwys 4, 13L/R, 22, 31L/R: Standard.



(CONTINUED ON FOLLOWING PAGE)

NOTE: Chart not to scale.