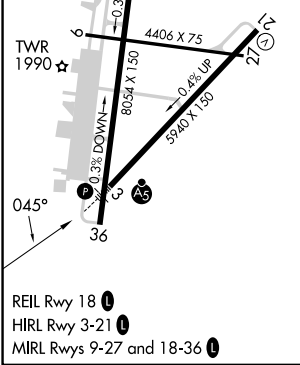
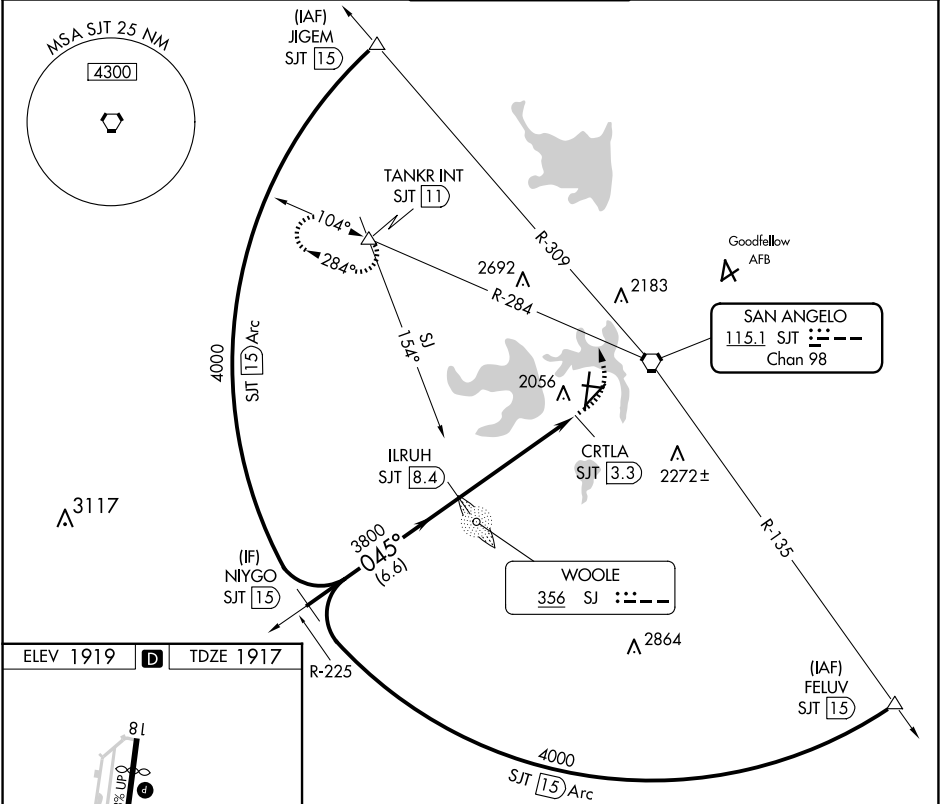


VORTAC SJT	APP CRS	Rwy Idg	5940
115.1	045°	TDZE	1917
Chan 98		Apt Elev	1919

VOR Y or TACAN Y RWY 3  
SAN ANGELO RGNL/MATHIS FLD (SJT)

DME required.	MALSR	MISSED APPROACH: Climbing left turn to 4400 on SJT VORTAC R-284 to TANKR INT/11 DME and hold, continue climb-in-hold to 4400.
Inop table does not apply to Cat A and B. Circling NA for Cat E west of Rwy 18-36. For inop ALS, increase Cat C-E visibility to 2 SM.		

ATIS	SAN ANGELO APP CON ★	MATHIS TOWER ★	GND CON	UNICOM
128.45 319.0	125.35 354.1	118.3 (CTAF) 0 284.7	121.9 348.6	122.95



	NIYGO SJT (15)	ILRUH SJT (8.4)	SJT (4.8)	CRTLA SJT (3.3)	4400 SJT R-284	TANKR
	4000	3800	3800	3800		
	045°	306° TCH 50				
	6.6 NM	3.6 NM	1.5	0.5		
CATEGORY	A	B	C	D	E	
S-3	2620/50	703 (800-1)	2620-1½	703 (800-1½)		
CIRCLING	2620-1	701 (800-1)	2620-2 701 (800-2)	2700-2½ 781 (800-2½)	2700-2¾ 781 (800-2¾)	

SC-3, 10 JUL 2025 to 07 AUG 2025

SC-3, 10 JUL 2025 to 07 AUG 2025