

ARRIVAL ROUTE DESCRIPTION

HELPR TRANSITION (HELPR.SPANE8): From over HELPR on FFU R-100 to SPANE, thence

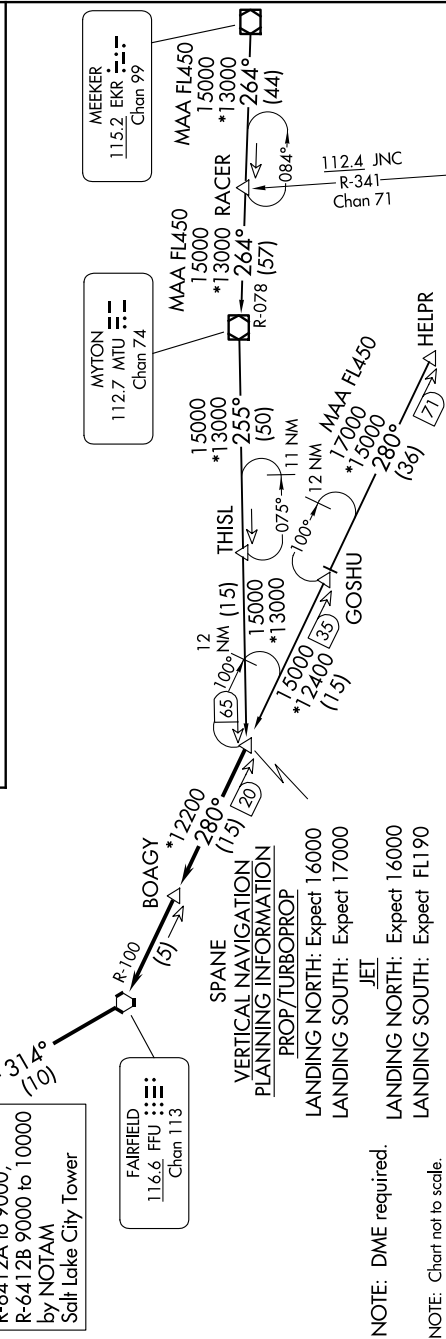
MEEKER TRANSITION [EKR.SPANE8]: From over EKR VOR/DME on EKR R-264 to RACER, then on EKR R-264 and MTU R-078 to MTU VOR/DME, then on MTU R-255 to SPANE, thence . . .

LANDING NORTH: From SPANE on FFU R-100 to BOAGY, then to FFU VORTAC. Expect ILS RWY 34R approach.

LANDING SOUTH: From SPANE on FFU R-100 to BOAGY, then to FFU VORTAC, then on FFU R-314 to DRYVE, then on OGD R-163 to CHHIP. After CHHIP, fly heading 345° for vectors to ILS or Visual RWY 16R approach

LOST COMMUNICATIONS

LANDING SOUTH: In the event of lost communications, at CHHIP proceed direct OGD VORTAC. Maintain 12000 until OGD VORTAC.



NOTE: Chart not to scale.