

WAAS CH 42843 W35A	APP CRS 344°	Rwy Idg TDZE Apt Elev	9272 4227 4231
--	------------------------	-----------------------------	---

RNAV (GPS) Y RWY 35

SALT LAKE CITY INTL (SLC)

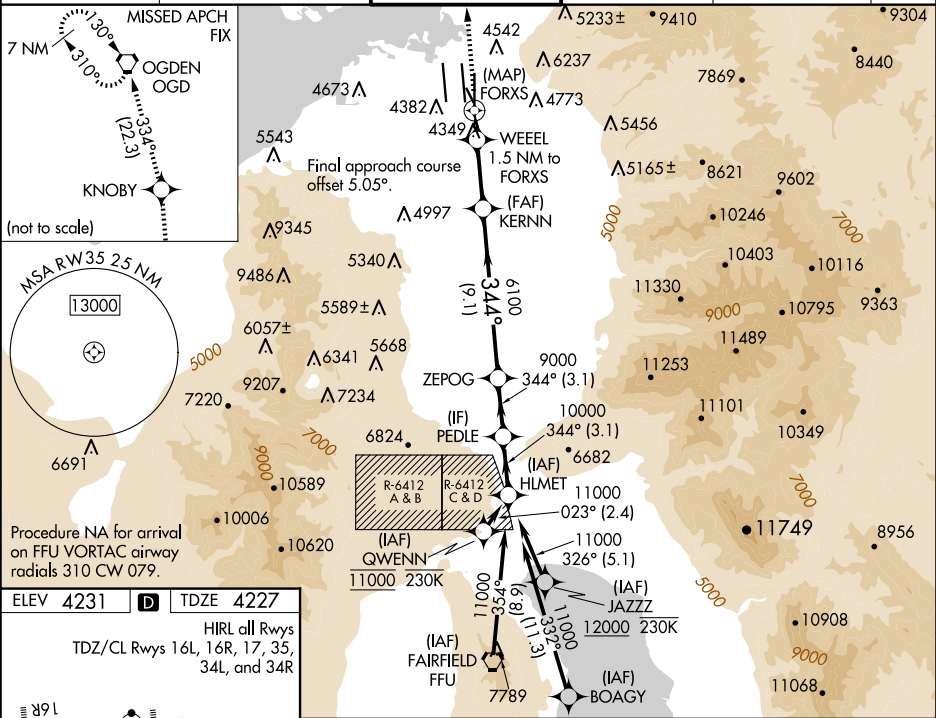
RNP APCH - GPS.

Simultaneous approach authorized. LNAV procedure NA during simultaneous operations. For uncompensated Baro-VNAV systems, LNAV/VNAV NA below -23°C or above 49°C. Use of FD or AP required during simultaneous operations. For inop ALS, increase LPV Cat E visibility to RVR 4000, increase LNAV/VNAV all Cats visibility to RVR 4500, and increase LNAV Cats C/D/E visibility to RVR 5500.

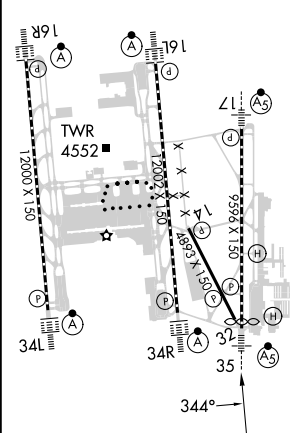
MALSR




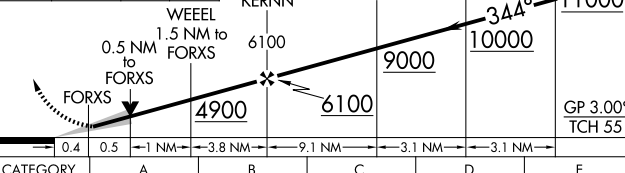
MISSED APPROACH: Climb to 9000 direct KNOBY and on track 334° to OGD VORTAC and hold.

D-ATIS 124.75 125.625	SALT LAKE CITY APP CON 125.7 284.6	SALT LAKE CITY TOWER 118.3 257.8	GND CON 121.9 348.6	CLNC DEL 127.3 379.975	CPDLC
---------------------------------	--	--	-------------------------------	----------------------------------	-------



ELEV 4231	TDZE 4227
HIRL all Rwys TDZ/CL Rwys 16L, 16R, 17, 35, 34L, and 34R	



9000	KNOBY	OGD	VGSi and RNAV glidepath not coincident (VGSi Angle 3.00/TCH 74).						
		tr 334°							
									
CATEGORY	A		B		C		D		E
LPV DA	4478/24 251 (300-½)								
INAV/ VNAV DA	4500/24 273 (300-½)					4507/24 280 (300-½)		4547/24 320 (400-½)	
INAV MDA	4600/24 373 (400-½)				4600/40 373 (400-¾)				