

SALT LAKE CITY, UTAH

AL-365 (FAA)

250.51

|  |                        |  |
|--|------------------------|--|
| WAAS<br>CH <b>49230</b><br><b>W34A</b> | APP CRS<br><b>344°</b> | Rwy Idg <b>12002</b><br>TDZE <b>4225</b><br>Apt Elev <b>4231</b> |
|--|------------------------|--|

RNAV (GPS) Y RWY 34R  
SALT LAKE CITY INTL (SLC)

RNP APCH - GPS.

**T** Simultaneous approach authorized. For uncompensated Baro-VNAV systems, RNAV/VNAV NA below -10°C or above 49°C. Use of FD or AP providing RNAV track guidance required during simultaneous operations. RNAV procedure NA during simultaneous operations. For inop ALS, increase LPV Cat E visibility to RVR 4000, RNAV/VNAV Cat E visibility to RVR 5000, RNAV Cats C/D visibility to RVR 5500. RNAV Cat E visibility to RVR 6000. Cat E restricted to USAF/USN aircraft.

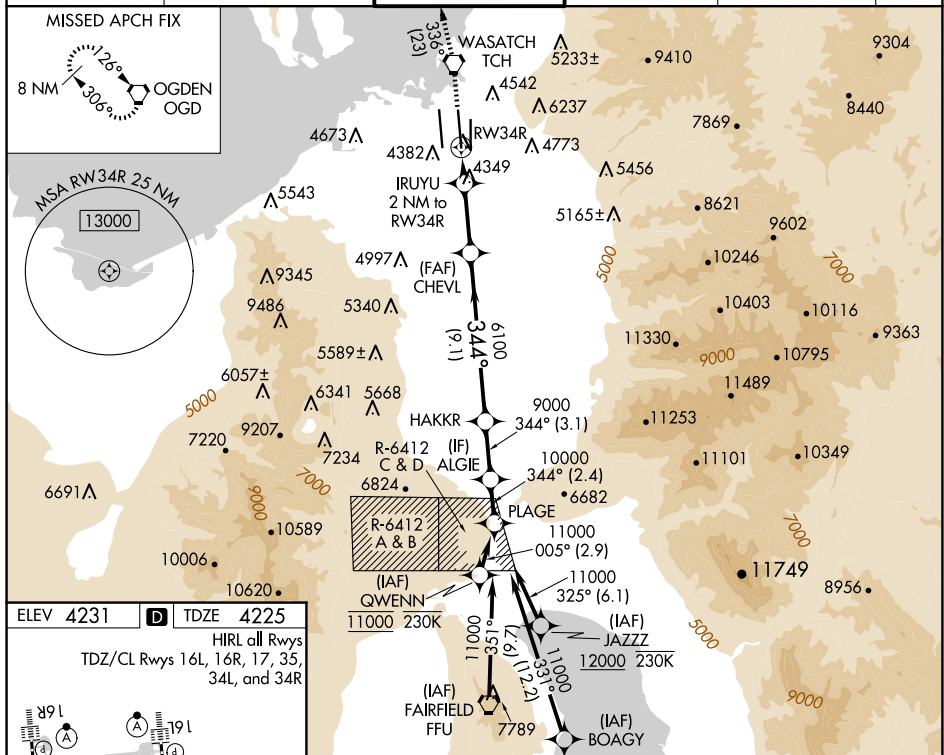
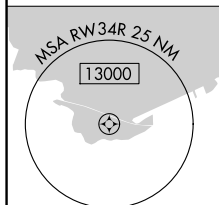
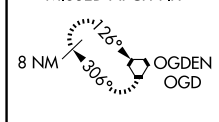
ALSF-2



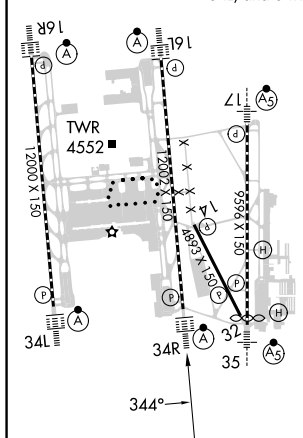
**MISSED APPROACH:** Climb to 9000 direct TCH VORTAC and on track 336° to OGD VORTAC and hold.

|                |                        |                      |               |               |       |
|----------------|------------------------|----------------------|---------------|---------------|-------|
| D-ATIS         | SALT LAKE CITY APP CON | SALT LAKE CITY TOWER | GND CON       | CLNC DEL      | CPDLC |
| 124.75 125.625 | 125.7 284.6            | 119.05 257.8         | 123.775 348.6 | 127.3 379.975 |       |

|  |                 |
|--|-----------------|
|  | MISSED APCH FIX |
|--|-----------------|



|                                |          |           |
|--------------------------------|----------|-----------|
| ELEV 4231                      | <b>D</b> | TDZE 4225 |
| HIRL all Rwy's                 |          |           |
| TDZ/CL Rwy's 16L, 16R, 17, 35, |          |           |
| 34L, and 34R                   |          |           |



|  |                     |            |                     |   |                        |      |       |       |
|--|---------------------|------------|---------------------|---|------------------------|------|-------|-------|
| 9000<br>↑  | TCH<br>◡            | tr<br>336° | OGD<br>◡            | VGS1 and RNAV glidepath not coincident<br>(VGS1 Angle 3.00°/TCH 73°). |                        |      | ALGIE | PLAGE |
|  |                     |            |                     | CHEVL   | HAKKR                  | 344° | 11000 |       |
| 1 NM to RW34R<br>2 NM to RW34R<br>4900<br>6100<br>9000<br>10000<br>GP 3.00°<br>TCH 55° |                     |            |                     |   |                        |      |       |       |
| CATEGORY   | A                   |            | B                   |   | C                      | D    | E     |       |
| LPV DA   | 4425/18 200 (200-½) |            |                     |   |                        |      |       |       |
| LNAP/<br>VNAV DA   | 4557/26 332 (400-½) |            |                     |   |                        |      |       |       |
| LNAP MDA   | 4600/24 375 (400-½) |            | 4600/35 375 (400-⅝) |   | 4640/40<br>415 (500-¾) |      |       |       |

SALT LAKE CITY, UTAH  
Amdt 2 20FEB25

40°47'N-111°59'W

SALT LAKE CITY INTL (SLC)

RNAV (GPS) Y RWY 34R

SW-4, 10 JUL 2025 to 07 AUG 2025