

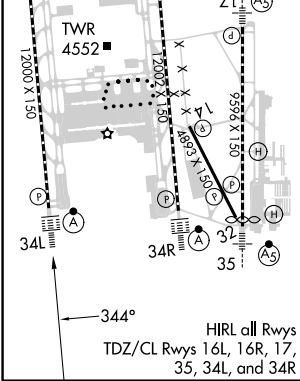
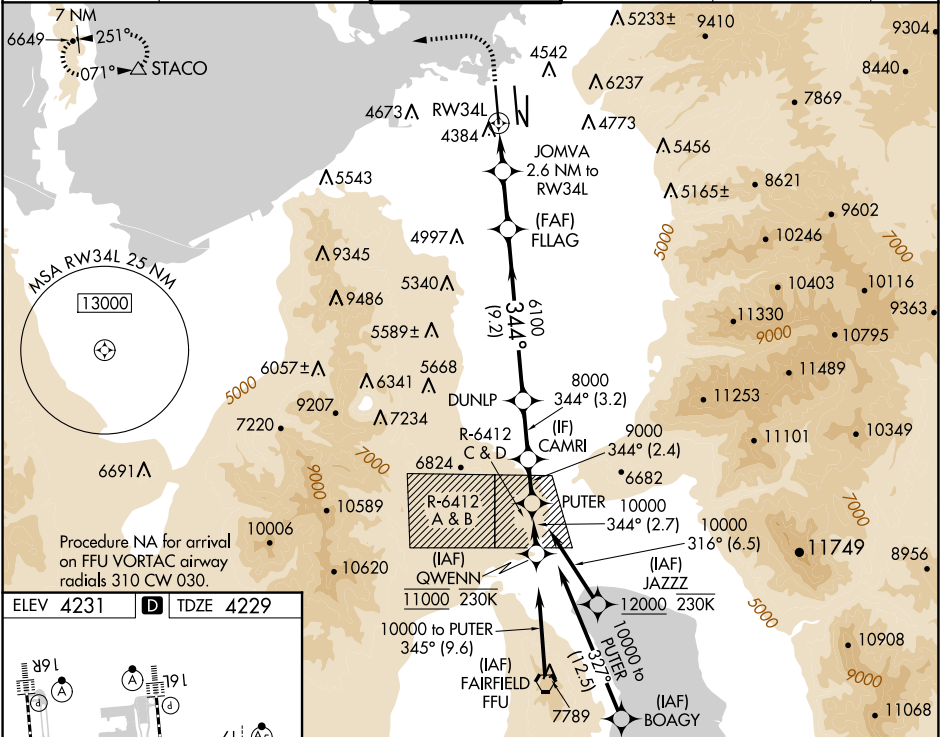
WAAS CH 70432 W34B	APP CRS 344°	Rwy Idg TDZE 4229 Apt Elev 4231
--	------------------------	---

RNAV (GPS) Y RWY 34L

SALT LAKE CITY INTL (SLC)

RNP APCH - GPS. Simultaneous approach authorized. LNAV procedure NA during simultaneous operations. Use of FD or AP providing RNAV track guidance required during simultaneous operations. For uncompensated Baro-VNAV systems, LNAV/VNAV NA below -10°C or above 49°C. For inop ALS, increase LPV Cat E visibility to RVR 4000, LNAV/VNAV all Cats visibility to RVR 6000, LNAV Cat E visibility to 1½ SM. Cat E restricted to USAF/USN aircraft.	ALSF-2 	MISSED APPROACH: Climb to 4800 then climbing left turn to 8100 direct STACO and hold.
---	------------	--

D-ATIS 124.75 125.625	SALT LAKE CITY APP CON 125.7 284.6	SALT LAKE CITY TOWER 132.65 336.4	GND CON 123.775 348.6	CLNC DEL 127.3 379.975	CPDLC
---------------------------------	--	---	---------------------------------	----------------------------------	-------



4800	8100	STACO	VGSi and RNAV glidepath not coincident (VGSi Angle 3.00/TCH 73).			PUTER
GP 3.00° TCH 55						
CATEGORY	A		B	C	D	E
LPV DA	4429/18 200 (200-½)					
LNAV/ VNAV	4640/40 411 (500-¾)					
LNAV MDA	4660/24 431 (500-½)		4660/40 431 (500-¾)			

SW-4, 10 JUL 2025 to 07 AUG 2025

SW-4, 10 JUL 2025 to 07 AUG 2025