

WAAS CH 70546 W16B	APP CRS 164°	Rwy Idg 12002 TDZE 4231 Apt Elev 4231
--	------------------------	--

RNAV (GPS) Y RWY 16L
SALT LAKE CITY INTL (SLC)

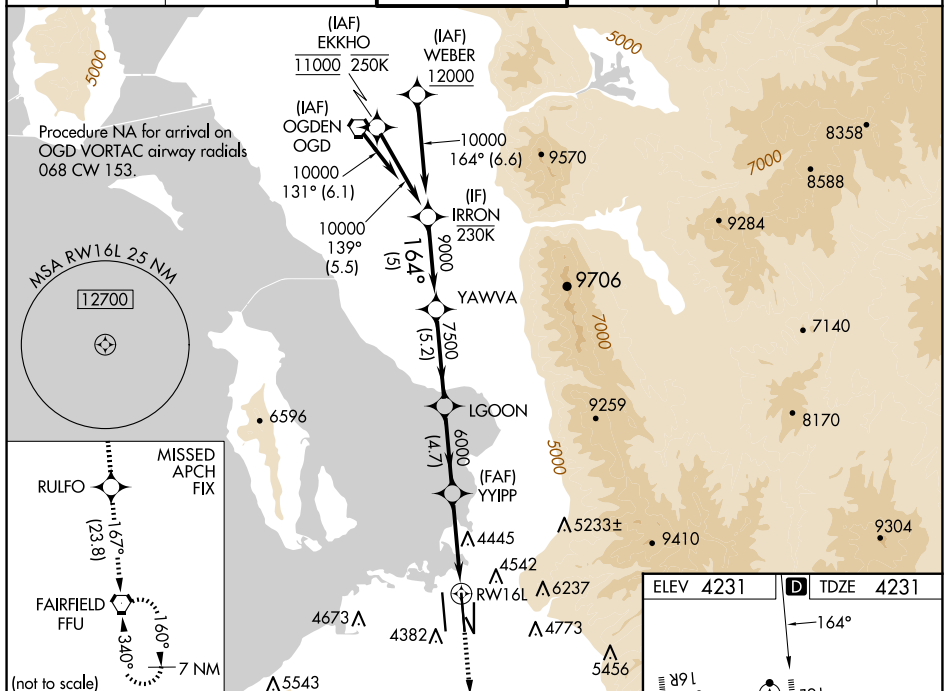
RNP APCH - GPS.

▼ LNAV procedure NA during simultaneous operations. Simultaneous approach authorized. Use of FD or AP required during simultaneous operations. For uncompensated Baro-VNAV systems, LNAV/VNAV NA below -10°C or above 49°C. For inop ALTS, increase LPV Cat E visibility to RVR 4000, increase LNAV/VNAV Cat A visibility to RVR 4500, increase Cats C/D visibility to RVR 5500, increase Cat E visibility to 6000, and increase LNAV Cat E visibility to 1½ SM.

ALSE-2

MISSED APPROACH:
Climb to 10000 direct
RULFO and on track
167° to FFU VORTAC
and hold.

D-ATIS 124.75 125.625	SALT LAKE CITY APP CON 125.7 284.6	SALT LAKE CITY TOWER 119.05 257.8	GND CON 123.775 348.6	CLNC DEL 127.3 379.975	CPDLC
--------------------------	---------------------------------------	--------------------------------------	--------------------------	---------------------------	-------



VGSB and RNAV glidepath not coincident
(VGSB Angle 3.00/TCH 70).

10000
IRRON
YAWVA
LGOON
YYIPP
6000
1.4 NM to RW16L
RW16L
1.4

1.64°
9000
7500
6000

5 NM
5.2 NM
4.7 NM
4 NM
1.4

GP 3.00°
TCH 55

10000
↑
RULFO
tr 167°
FFU

