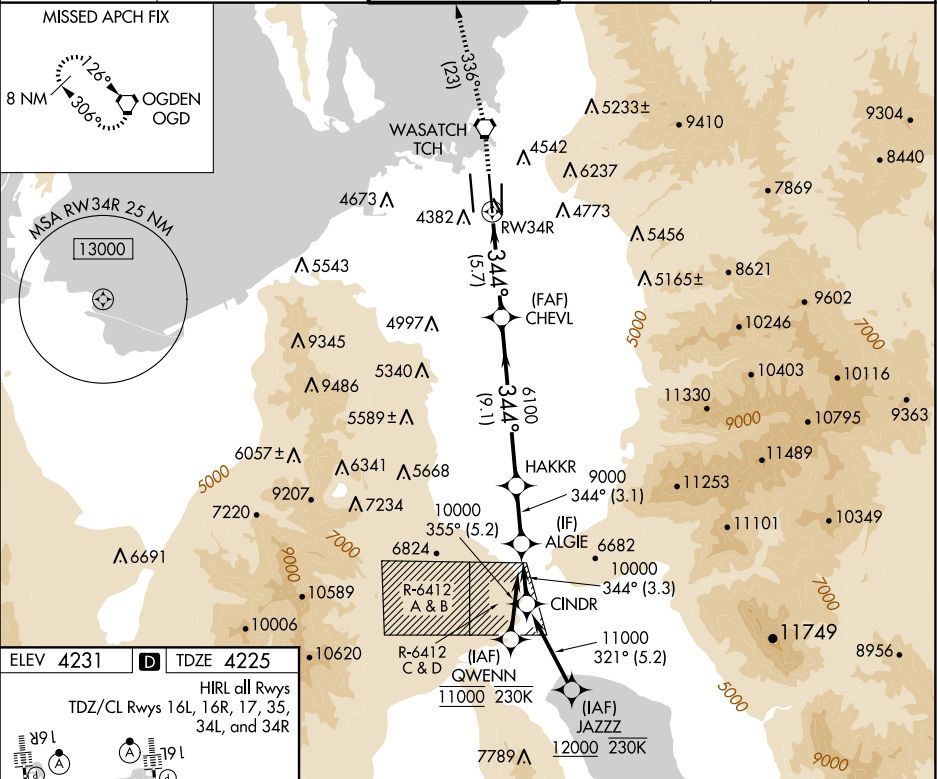


25051

RNAV (RNP) Z RWY 34R
SALT LAKE CITY INTL (SLC)

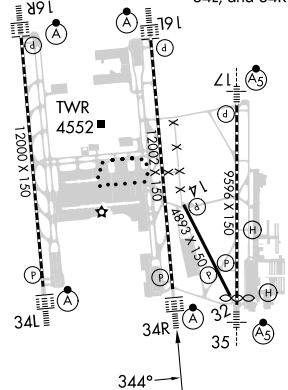
MISSED APPROACH: Climb to 9000 direct TCH VORTAC and on track 336° to OGD VORTAC and hold.

CPDLC



ELEV 4231	D	TDZE 4225
-----------	----------	-----------

HIRL all Rwys
TDZ/CL Rwys 16L, 16R, 17, 35,
34L, and 34R



9000 TCH tr 336° OGD VGS1 and RNAV glidepath not coincident (VGS1 Angle 3.00/TCH 73) ALGIE

HAKKR 10000

CHEVL 6100 344° 9000

RW34R 6100

GP 3.00 TCH 55

CATEGORY	A	B	C	D
RNP 0.10 DA		4546/26	321 (400- $\frac{1}{2}$)	
RNP 0.30 DA		4609/35	384 (400- $\frac{5}{6}$)	

AUTHORIZATION REQUIRED

SALT LAKE CITY INTL (SLC)

RNAV (RNP) Z RWY 34R

SW-4, 10 JUL 2025 to 07 AUG 2025