

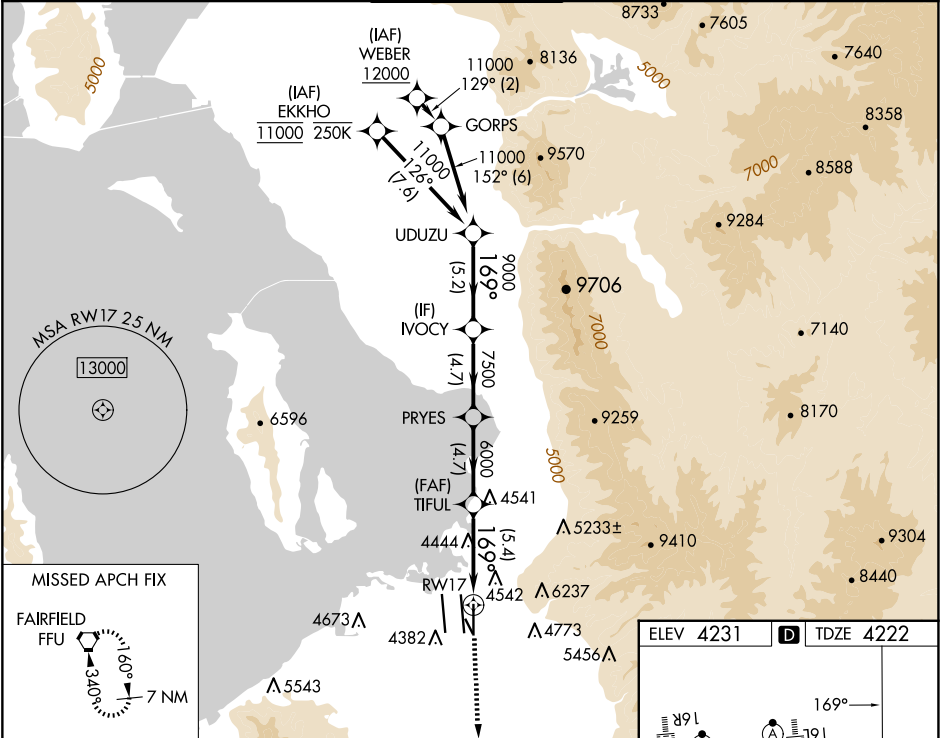
APP CRS	Rwy Idg	9596
169°	TDZE	4222
	Apt Elev	4231

RNAV (RNP) Z RWY 17

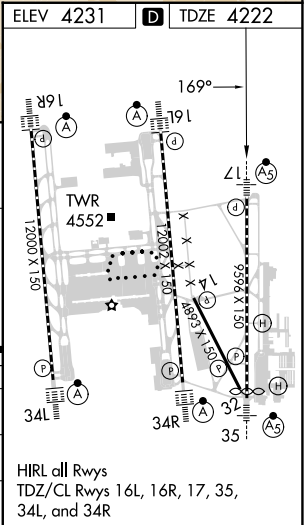
SALT LAKE CITY INTL (SLC)

RNP AR APCH - GPS.	MALSR	MISSED APPROACH: Climb to 4700 then climb to 10000 direct FFU VORTAC and hold.
For uncompensated Baro-VNAV systems, procedure NA below -10°C or above 54°C. Simultaneous approach authorized. For inop ALS, increase RNP 0.20 all Cnts visibility to RVR 4000 and RNP 0.30 all Cnts visibility to RVR 5500.		

D-ATIS	SALT LAKE CITY APP CON	SALT LAKE CITY TOWER	GND CON	CLNC DEL	CPDLC
124.75 125.625	125.7 284.6	118.3 257.8	121.9 348.6	127.3 379.975	



UDUZU	VGSI and RNAV glidepath not coincident (VGSI Angle 3.00/TCH 73).	4700	10000	FFU
11000	IVOCY	PRYES	TIFUL	RW17
GP 3.00°	9000	7500	6000	
TCH 55	5.2 NM	4.7 NM	4.7 NM	5.4 NM
CATEGORY	A	B	C	D
RNP 0.20 DA		4472/24	250 (300-½)	
RNP 0.30 DA		4564/30	342 (400-⅝)	
AUTHORIZATION REQUIRED				



SW-4, 10 JUL 2025 to 07 AUG 2025

SW-4, 10 JUL 2025 to 07 AUG 2025