

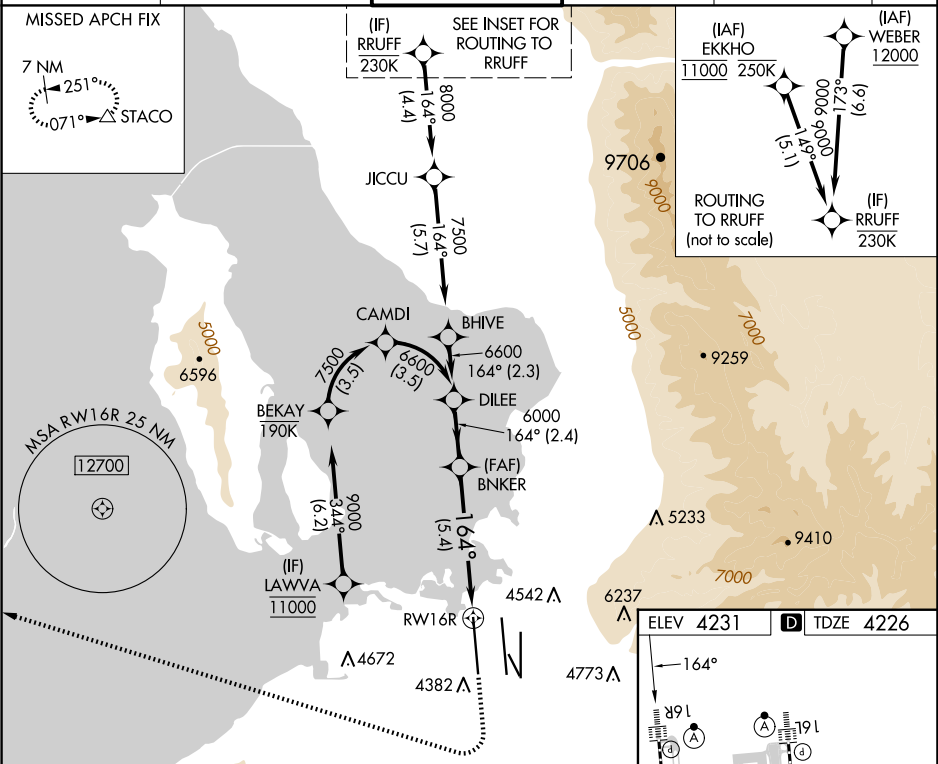
|         |          |       |
|---------|----------|-------|
| APP CRS | Rwy Idg  | 12000 |
| 164°    | TDZE     | 4226  |
|         | Apt Elev | 4231  |

RNAV (RNP) Z RWY 16R

SALT LAKE CITY INTL (SLC)

|  |        |  |
|--|--------|--|
| RNP AR APCH - GPS. Authorization required. From LAWVA: RF.   | ALSF-2 | MISSED APPROACH: Climb to 4800 then climbing right turn to 8100 direct STACO and hold. |
| For uncompensated Baro-VNAV systems, procedure NA below -10°C or above 54°C. Simultaneous approach authorized. For inop ALS, increase RNP 0.10 all Cats visibility to RVR 4000, and increase RNP 0.30 all Cats visibility to RVR 5500. |        | *Missed approach requires minimum climb of 339 feet per NM to 4680.                    |

|                |                        |                      |               |               |       |
|----------------|------------------------|----------------------|---------------|---------------|-------|
| D-ATIS         | SALT LAKE CITY APP CON | SALT LAKE CITY TOWER | GND CON       | CLNC DEL      | CPDLC |
| 124.75 125.625 | 125.7 284.6            | 132.65 336.4         | 123.775 348.6 | 127.3 379.975 |       |



|  |   |         |             |   |
|--|---|---------|-------------|---|
| VGSI and RNAV glidepath not coincident (VGSI Angle 3.00/TCH 73). |   |         |             |   |
| See planview for multiple IF locations.                          |   |         |             |   |
| DILEE  |   |         |             |   |
| 6600   |   |         |             |   |
| 164°   |   |         |             |   |
| BNKER  |   |         |             |   |
| 6000   |   |         |             |   |
| 6000   |   |         |             |   |
| RW16R  |   |         |             |   |
| GP 3.00° TCH 34  |   |         |             |   |
| 2.4 NM   |   |         |             |   |
| 5.4 NM   |   |         |             |   |
| CATEGORY   | A | B       | C           | D |
| RNP 0.10 DA*   |   | 4481/24 | 255 (300-½) |   |
| RNP 0.30 DA  |   | 4597/35 | 371 (400-¾) |   |

AUTHORIZATION REQUIRED

