


APP CRS 164°	Rwy Idg 12002 TDZE 4231 Apt Elev 4231
------------------------	------------------------------------------------------------------

RNAV (RNP) Z RWY 16L
SALT LAKE CITY INTL (SLC)

RNP AR APCH - GPS.				ALS-F-2 	MISSED APPROACH: Climb to 10000 direct RULFO and on track 167° to FFU VORTAC and hold. *Missed approach requires minimum climb of 323 feet per NM to 4740. #Missed approach requires minimum climb of 256 feet per NM to 4760.			
<div><div><div>T</div><div>For uncompensated Baro-VNAV systems, procedure NA below -10°C or above 54°C. Simultaneous approach authorized. For inop ALS, increase RNP 0.16 all Cats visibility RVR to 5500, increase RNP 0.16 (323) all Cats visibility to RVR 4500 and increase RNP 0.30 all Cats visibility to RVR 5500.</div></div></div>								
D-ATIS 124.75 125.625		SALT LAKE CITY APP CON 125.7 284.6		SALT LAKE CITY TOWER 119.05 257.8		GND CON 123.775 348.6	CLNC DEL 127.3 379.975	CPDLC

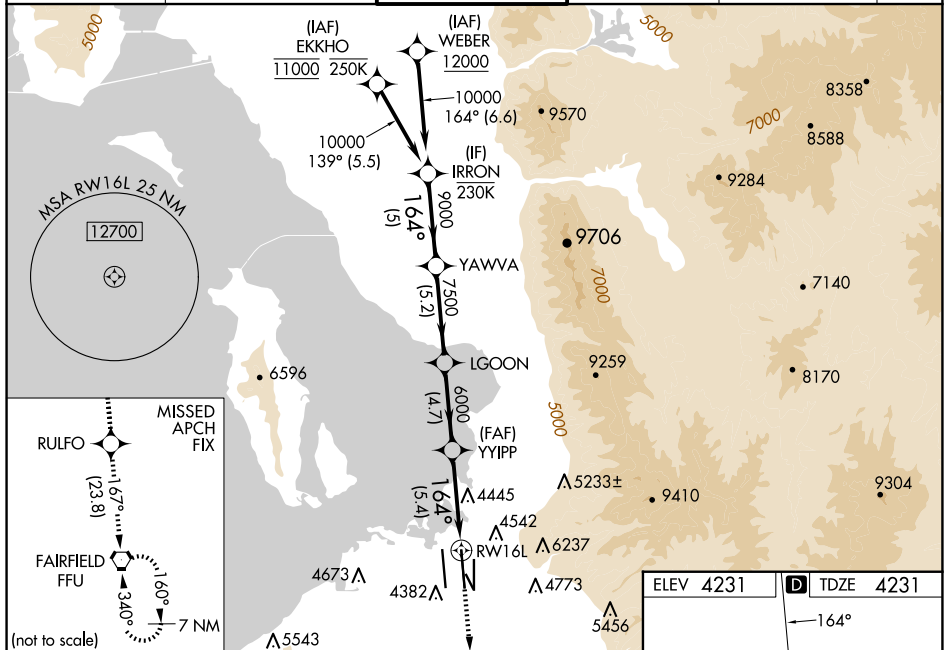


Diagram illustrating the RW16L VORTAC instrument approach. The approach is for RW16L. The diagram shows the 16.7° glide path and the 3.00° TCH 55° glide path. Key waypoints and altitudes are marked: IRRON (10000), YAWVA (9000), LGOON (7500), YYIPP (6000), and RW16L (3000). The approach is for RW16L. The diagram also shows the VGSB and RNAV glidepaths not coincident (VGSB Angle 3.00/TCH 70).

