

QWENN SIX ARRIVAL (RNAV)

SALT LAKE CITY INTL (SLC)

SALT LAKE CITY, UTAH

BRYCE CANYON TRANSITION (BCE.QWENN6)

MILFORD TRANSITION (MLF.QWENN6)

From QWENN on track 344°. Expect RADAR vectors for ILS or RNAV approach to Rwy's 34L/R, 35 or RADAR vectors to final approach course.

LOST COMMUNICATIONS

After QWENN, proceed on the ILS or LOC RWY 34L approach.

RNAV 1 - GPS.

RADAR required.

SALT LAKE CITY APP CON

128.6 322.3

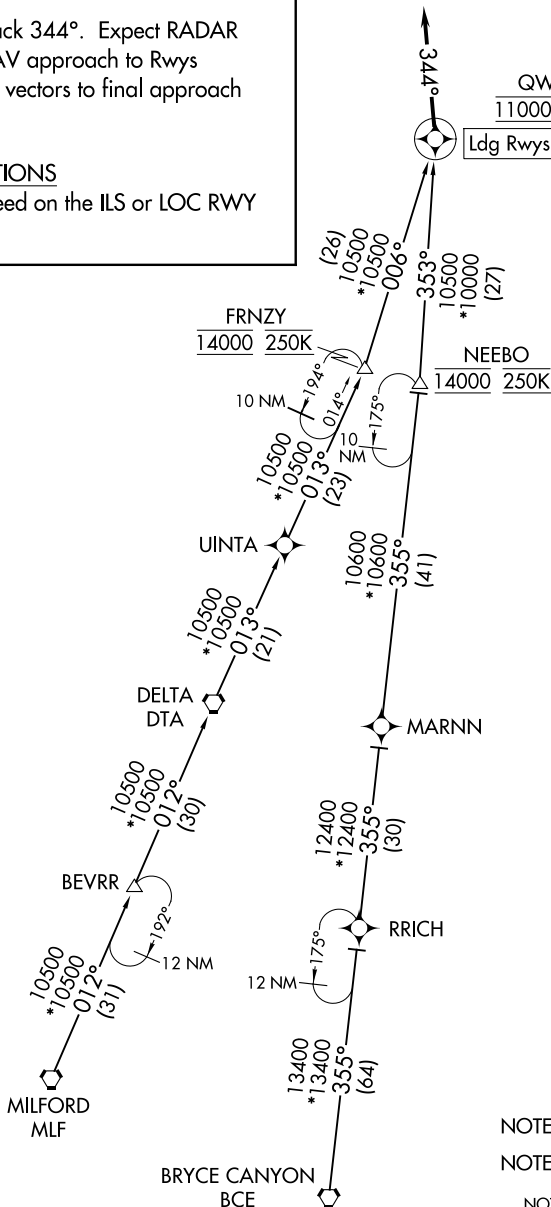
D-ATIS

124.75 125.625

QWENN

11000 230K

Ldg Rwys 34L/R, 35



NOTE: Jet aircraft only.

NOTE: GPS required.

NOTE: Chart not to scale.

QWENN SIX ARRIVAL (RNAV)

(QWENN.QWENN6) 20FEB25

SALT LAKE CITY, UTAH

SALT LAKE CITY INTL (SLC)

SW-4, 10 JUL 2025 to 07 AUG 2025