


SALT LAKE CITY, UTAH

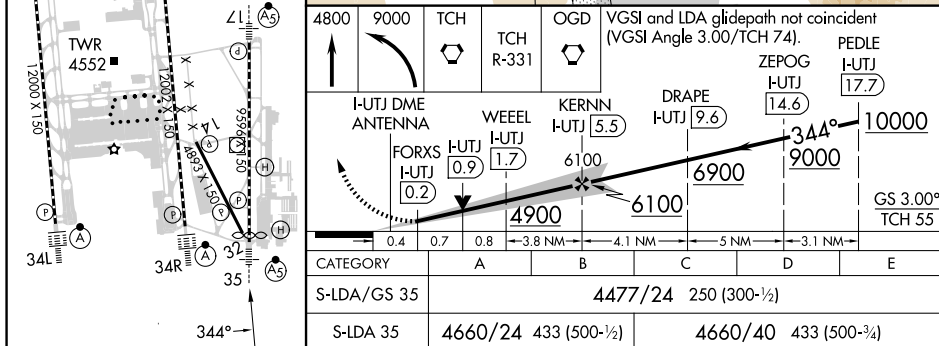
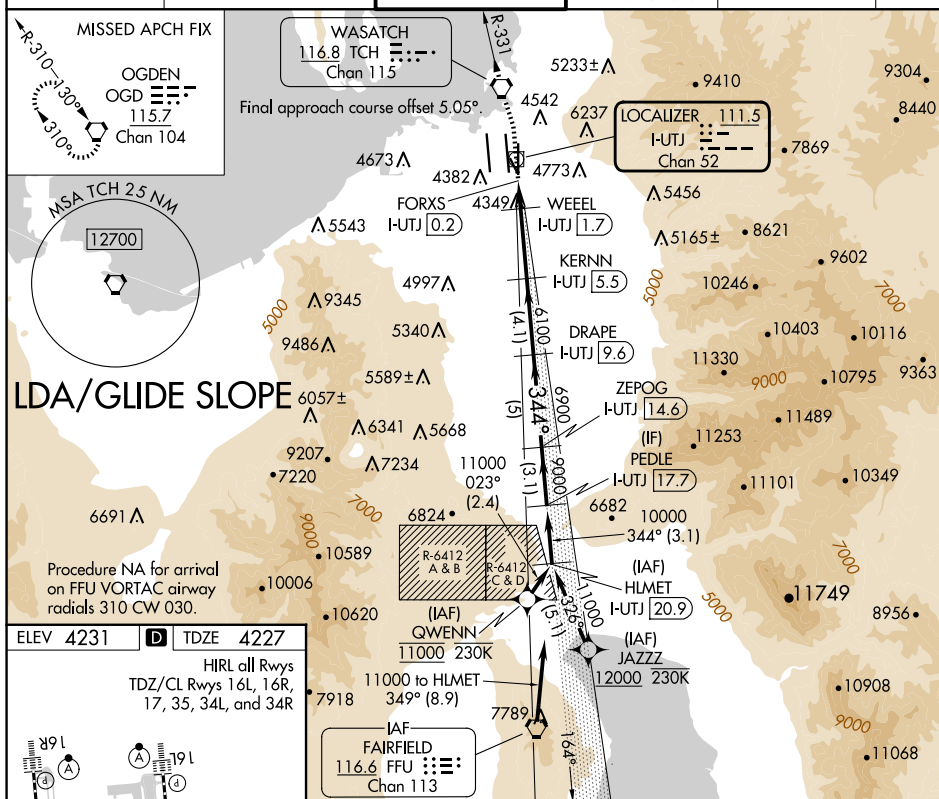
AL-365 (FAA)

25079

LOC/DME I-UTJ 111.5 Chan 52	APP CRS 344°	Rwy Idg 9272 TDZE 4227 Apt Elev 4231
---	------------------------	---

LDA RWY 35
SALT LAKE CITY INTL (SLC)

RNP APCH - GPS. From QWENN or JAZZZ.		MALSR 	MISSED APPROACH: Climb to 4800 then climbing left turn to 9000 direct TCH VORTAC and on TCH VORTAC R-331 to OGD VORTAC and hold.		
DME required.					
▼ Simultaneous approach authorized. For inop ALS, increase S-LDA/ GS 35 all Cats visibility to RVR 4000, increase S-LDA 35 Cat E visibility to 1 1/4 SM. Cat E restricted to USAF/USN aircraft.					
D-ATIS	SALT LAKE CITY APP CON	SALT LAKE CITY TOWER	GND CON	CLNC DEL	CPDLC
124.75 125.625	125.7 284.6	118.3 257.8	121.9 348.6	127.3 379.975	



SALT LAKE CITY, UTAH
Amdt 1A 20MAR25

40°47'N-111°59'W

SALT LAKE CITY INTL (SLC)
LDA RWY 35

SW-4, 10 JUL 2025 to 07 AUG 2025

SW-4, 10 JUL 2025 to 07 AUG 2025