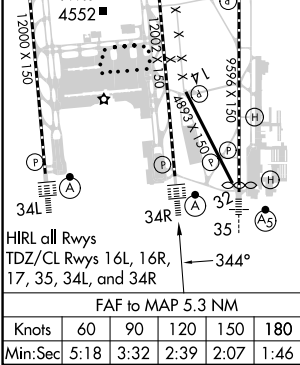
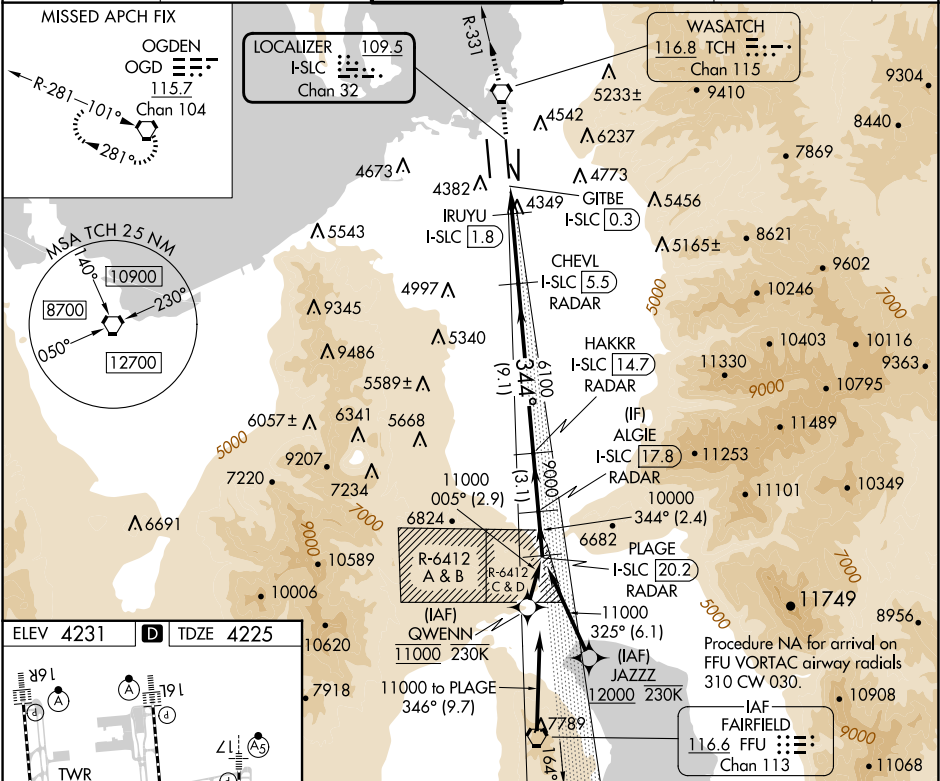


LOC/DME I-SLC 109.5 Chan 32	APP CRS 344°	Rwy Idg 12002 TDZE 4225 Apt Elev 4231
---	------------------------	--

ILS or LOC RWY 34R
SALT LAKE CITY INTL (SLC)

RNP APCH - GPS. From QWENN or JAZZZ.	ALSF-2 	MISSED APPROACH: Climb to 9000 direct TCH VORTAC and on TCH VORTAC R-331 to OGD VORTAC and hold.
DME required for LOC only. DME or RADAR required.		
Simultaneous approach authorized. For inop ALS, increase S-LOC 34R Cat C/D visibility to RVR 5500.		

D-ATIS 124.75 125.625	SALT LAKE CITY APP CON 125.7 284.6	SALT LAKE CITY TOWER 119.05 257.8	GND CON 123.775 348.6	CLNC DEL 127.3 379.975	CPDLC
---------------------------------	--	---	---------------------------------	----------------------------------	-------



9000 TCH	OGD	VGSI and ILS glidepath not coincident (VGSI Angle 3.00/TCH 73).	PLAGE I-SLC [20.2]
TCH R-331		CHEVL I-SLC [5.5] RADAR	HAKKR I-SLC [14.7] RADAR
I-SLC DME ANTENNA	IRUYU I-SLC [1.8]	6100	9000
GITBE I-SLC [0.3]		4900	10000
			GS 3.00° TCH 55
0.5	1.5 NM	3.8 NM	9.1 NM
3.1 NM	2.4 NM		
CATEGORY	A	B	C
S-ILS 34R	4425/18 200 (200-½)		
S-LOC 34R	4600/24	375 (400-½)	4600/35 375 (400-¾)