

LOC/DME I-BNT 111.5 Chan 52	APP CRS 169°	Rwy Idg 9596 TDZE 4222 Apt Elev 4231
---	------------------------	---

ILS or LOC RWY 17
SALT LAKE CITY INTL (SLC)

From WEBER, EKKHO: RNAV 1-GPS required.

DME or RADAR required.

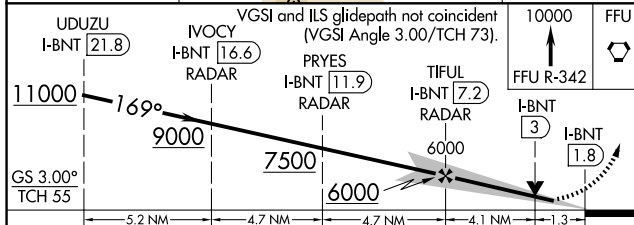
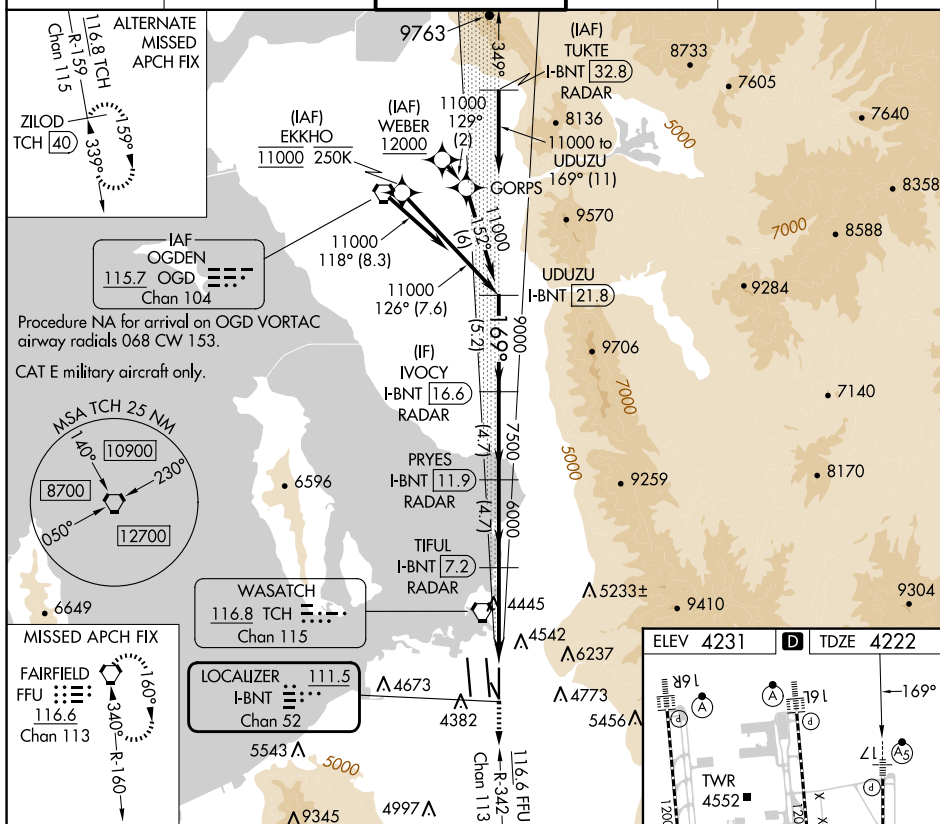
T Simultaneous approach authorized. For inop ALS, increase S-ILS 17 Cat E visibility to RVR 4000, increase S-LOC 17 Cat C/D/E visibility to 1 $\frac{3}{8}$ SM.

MALSI

MISSED APPROACH: Climb to 10000
on FFU R-342 to FFU VORTAC and hold.

D-ATIS	SALT LAKE CITY APP CON	SALT LAKE CITY TOWER	GND CON	CLNC DEL	CPDLC
124.75 125.625	125.7 284.6	118.3 257.8	121.9 348.6	127.3 379.975	



CATEGORY	A	B	C	D	E
S-ILS 17	4422/18 200 (200-½)				
S-LOC 17	4700/24	478 (500-½)	4700/50 478 (500-1)		

