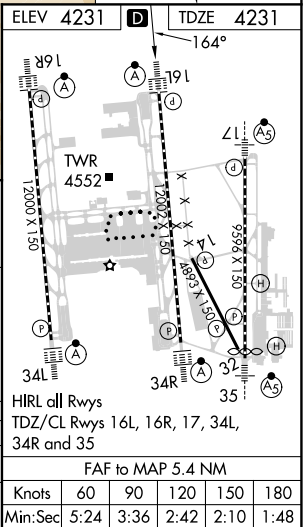
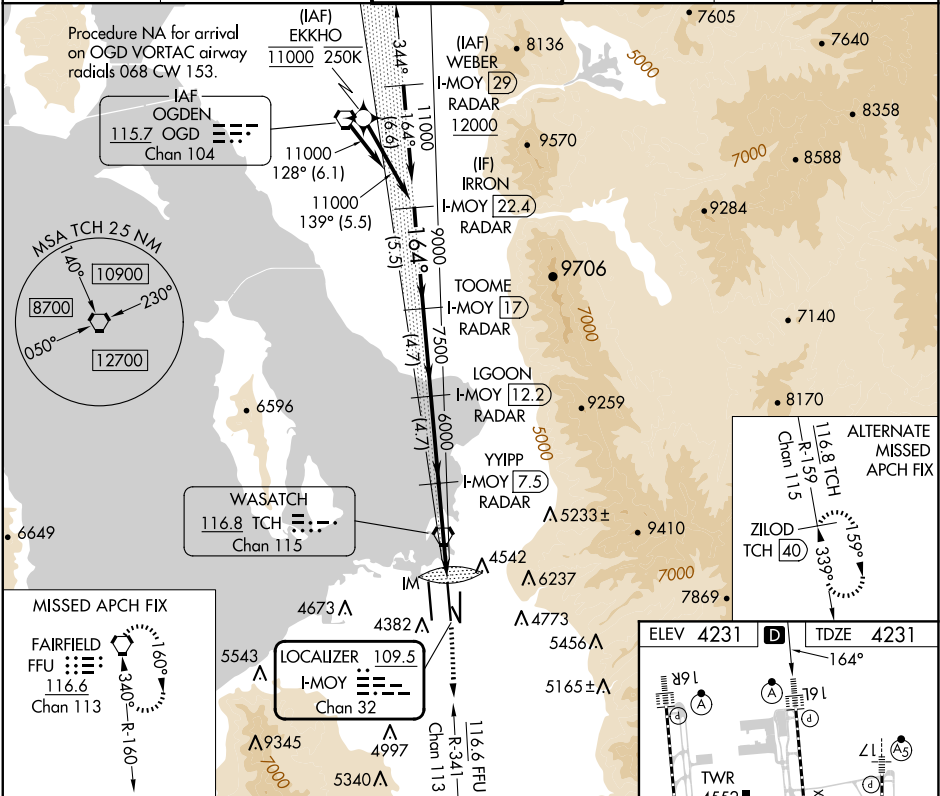


LOC/DME I-MOY 109.5 Chan 32	APP CRS 164°	Rwy Idg 12002 TDZE 4231 Apt Elev 4231
---	------------------------	--

ILS or LOC RWY 16L
SALT LAKE CITY INTL (SLC)

RNP APCH - GPS. From EKKHO. DME or RADAR required.	ALSF-2 	MISSED APPROACH: Climb to 4800 then climb to 10000 on FFU VORTAC R-341 to FFU VORTAC and hold.
Simultaneous approach authorized. For inop ALS, increase S-LOC 16L Cat C/D visibility to 1 3/8 SM.		

D-ATIS 124.75 125.625	SALT LAKE CITY APP CON 125.7 284.6	SALT LAKE CITY TOWER 119.05 257.8	GND CON 123.775 348.6	CLNC DEL 127.3 379.975	CPDLC
---------------------------------	--	---	---------------------------------	----------------------------------	-------



SW-4, 10 JUL 2025 to 07 AUG 2025

SW-4, 10 JUL 2025 to 07 AUG 2025