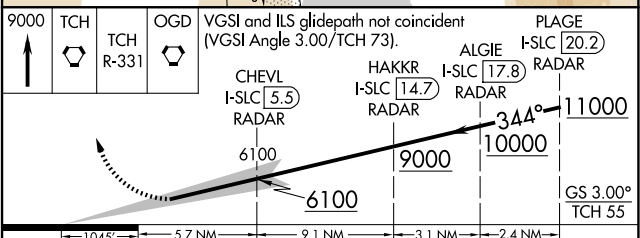
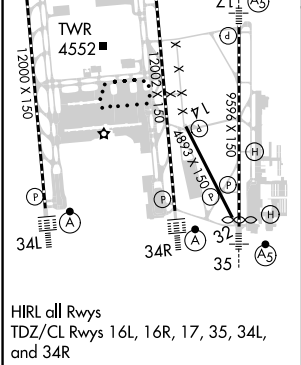
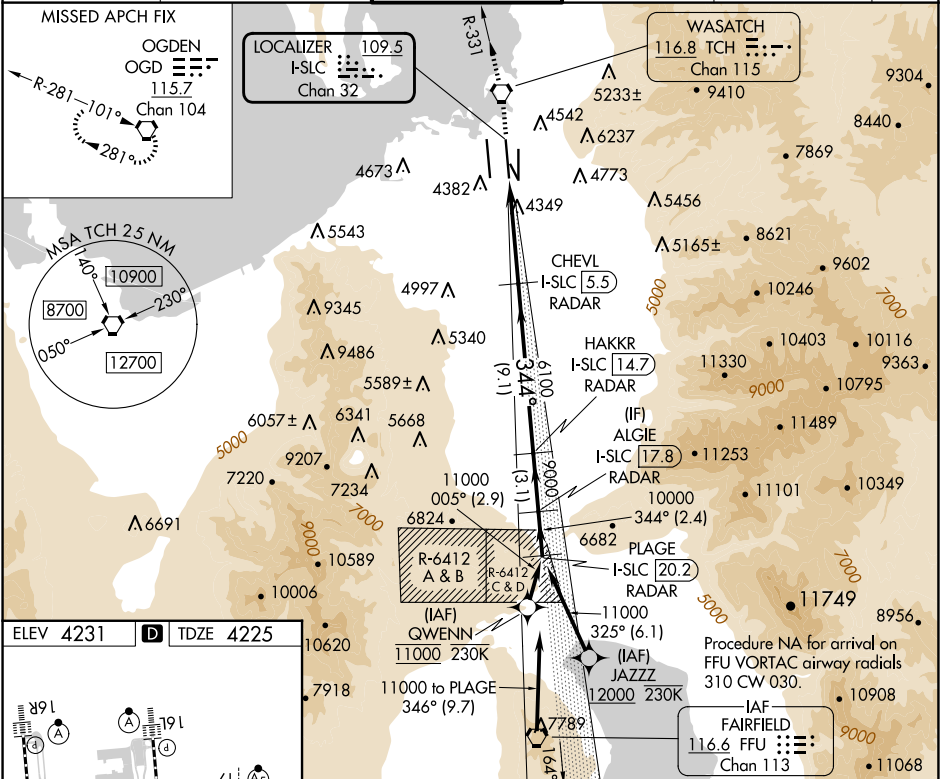


LOC/DME I-SLC	APP CRS	Rwy Idg	12002
109.5	344°	TDZE	4225
Chan 32		Apt Elev	4231

ILS RWY 34R (SA CAT I)
SALT LAKE CITY INTL (SLC)

RNP APCH - GPS. From QWENN or JAZZZ.		ALSF-2	MISSED APPROACH: Climb to 9000 direct TCH VORTAC and on TCH VORTAC R-331 to OGD VORTAC and hold.
DME or RADAR required.		(A)	
Simultaneous approach authorized. Requires specific OPSPEC, MSPEC, or LOA approval.			

D-ATIS	SALT LAKE CITY APP CON	SALT LAKE CITY TOWER	GND CON	CLNC DEL	CPDLC
124.75 125.625	125.7 284.6	119.05 257.8	123.775 348.6	127.3 379.975	



CATEGORY	A	B	C	D
S-ILS 34R	RA 149/14 150 DA 4375			
SA CATEGORY I ILS - SPECIAL AIRCREW & AIRCRAFT CERTIFICATION REQUIRED				

SW-4, 10 JUL 2025 to 07 AUG 2025

SW-4, 10 JUL 2025 to 07 AUG 2025