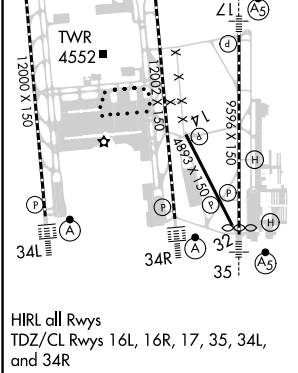
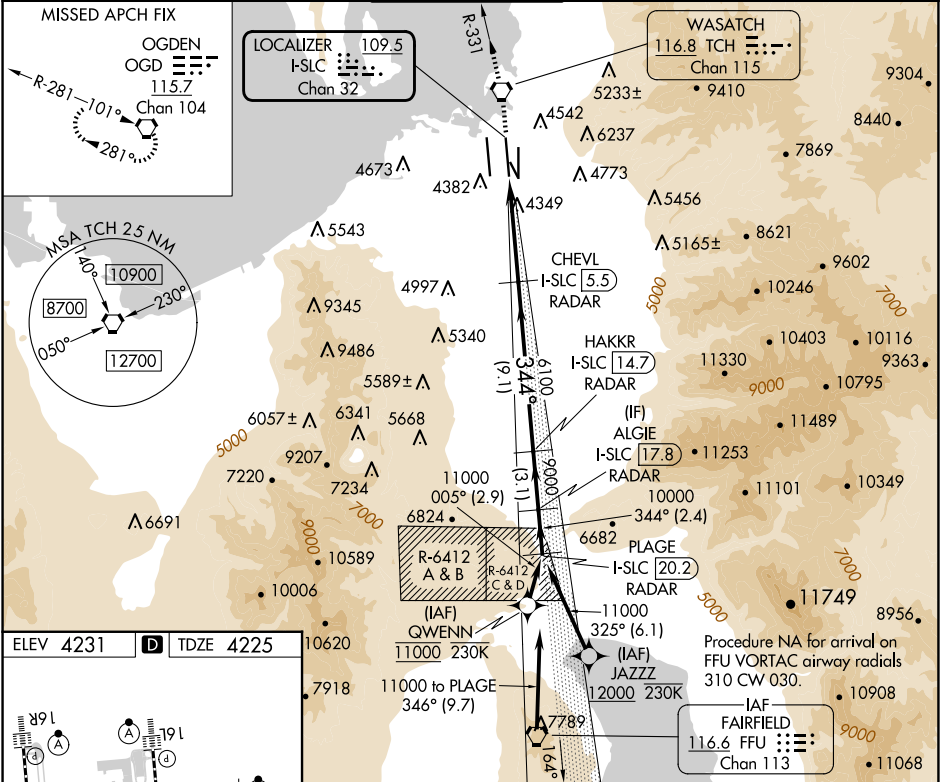


LOC/DME I-SLC	APP CRS	Rwy Idg	12002
109.5	344°	TDZE	4225
Chan 32		Apt Elev	4231

ILS RWY 34R (CAT II & III)
SALT LAKE CITY INTL (SLC)

RNP APCH - GPS. From QWENN or JAZZZ.	ALSF-2	MISSED APPROACH: Climb to 9000 direct TCH VORTAC and on TCH VORTAC R-331 to OGD VORTAC and hold.
DME or RADAR required.		
Simultaneous approach authorized. CAT II: RVR 1000 authorized with specific OPSPEC, MSPEC, or LOA approval and use of autoland or HUD to touchdown.		

D-ATIS	SALT LAKE CITY APP CON	SALT LAKE CITY TOWER	GND CON	CLNC DEL	CPDLC
124.75 125.625	125.7 284.6	119.05 257.8	123.775 348.6	127.3 379.975	



9000 TCH	TCH R-331	OGD	VGSI and ILS glidepath not coincident (VGSI Angle 3.00°/TCH 73°).	PLAGE I-SLC [20.2] RADAR
			CHEVL I-SLC [5.5] RADAR	ALGIE I-SLC [17.8] RADAR
			HAKKR I-SLC [14.7] RADAR	
				344° 11000
				GS 3.00° TCH 55
				1045° 5.7 NM 9.1 NM 3.1 NM 2.4 NM
CATEGORY	A	B	C	D
S-ILS 34R	CAT II RA 99/12 100 DA 4325			
S-ILS 34R	CAT III RVR 03			
CATEGORY II & III ILS - SPECIAL AIRCREW & AIRCRAFT CERTIFICATION REQUIRED				

SW-4, 10 JUL 2025 to 07 AUG 2025

SW-4, 10 JUL 2025 to 07 AUG 2025