



SALT LAKE CITY, UTAH

AL-365 (FAA)

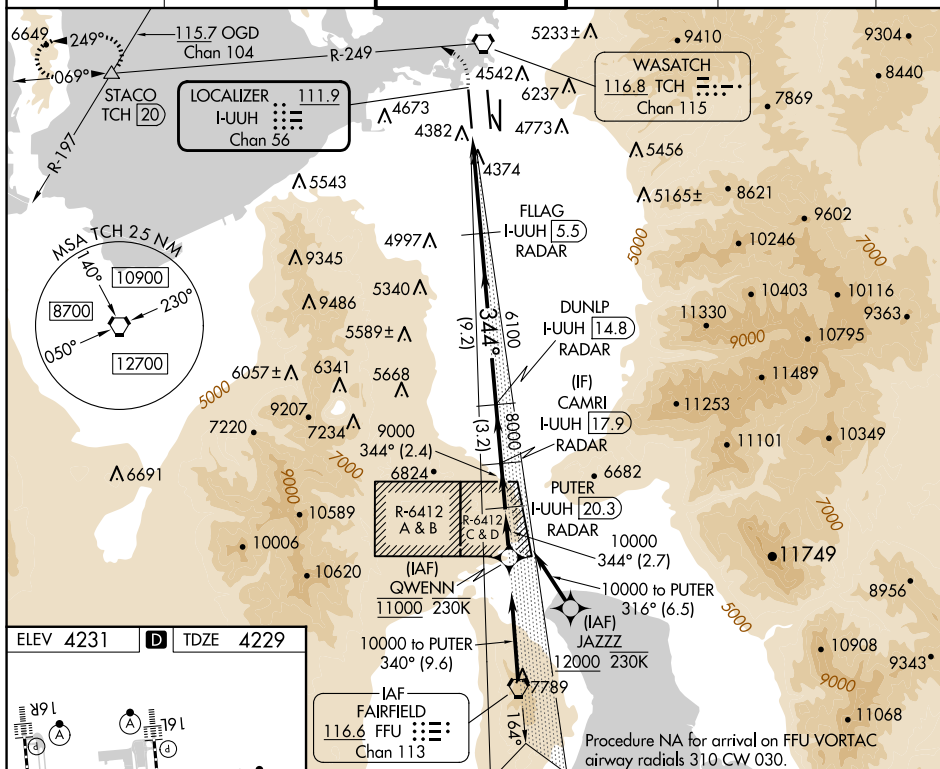
25051

LOC/DME I-UUH 111.9 Chan 56	APP CRS 344°	Rwy Idg 12000 TDZE 4229 Apt Elev 4231
---	------------------------	--

ILS RWY 34L (SA CAT I)
SALT LAKE CITY INTL (SLC)

RNP APCH - GPS. From QWENN or JAZZZ.	ALSF-2 	MISSED APPROACH: Climb to 4800 then climbing left turn to 8100 on TCH VORTAC R-249 to STACO INT/TCH 20 DME and hold.
DME or RADAR required.		
 Simultaneous approach authorized. Requires specific OPSPEC, MSPEC, or LOA approval.		

D-ATIS	SALT LAKE CITY APP CON	SALT LAKE CITY TOWER	GND CON	CLNC DEL	CPDLC
124.75 125.625	125.7 284.6	132.65 336.4	123.775 348.6	127.3 379.975	



CATEGORY	A	B	C	D
S-ILS 34L	RA 157/14 150 DA 4379			

SA CATEGORY I ILS - SPECIAL AIRCREW
& AIRCRAFT CERTIFICATION REQUIRED

SALT LAKE CITY, UTAH
Amdt 4 20FEB25

40°47'N-111°59'W

SALT LAKE CITY INTL (SLC)
ILS RWY 34L (SA CAT I)

SW-4, 10 JUL 2025 to 07 AUG 2025

SW-4, 10 JUL 2025 to 07 AUG 2025