


SALT LAKE CITY, UTAH

AL-365 (FAA)

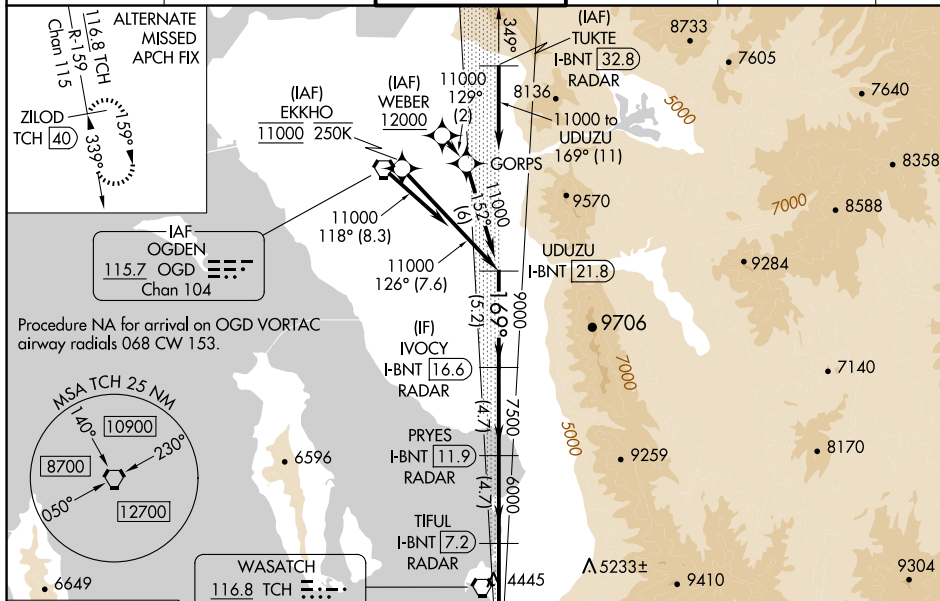
25051

LOC/DME I-BNT <b>111.5</b> Chan <b>52</b>	APP CRS <b>169°</b>	Rwy Idg <b>9596</b> TDZE <b>4222</b> Apt Elev <b>4231</b>
---	------------------------	---

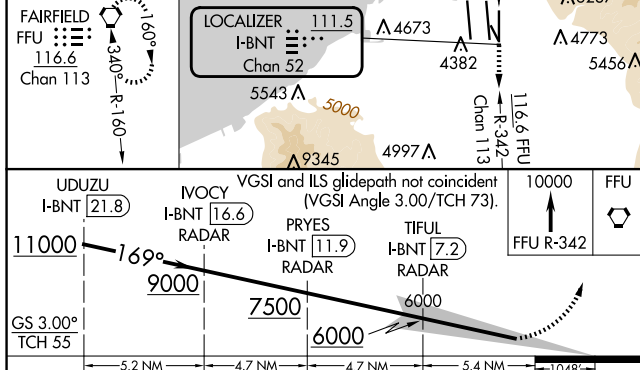
ILS RWY 17 (SA CAT I & II)  
SALT LAKE CITY INTL (SLC)

From WEBER, EKKHO: RNAV 1-GPS required.	MALSR 	MISSED APPROACH: Climb to 10000 on FFU R-342 to FFU VORTAC and hold.
DME or RADAR required.		
<b>T</b> Simultaneous approach authorized. SA CAT I: Requires specific OPSPEC, MSPEC, or LOA approval and use of HUD to DH. SA CAT II: Reduced lighting: Requires specific OPSPEC, MSPEC, or LOA approval and use of autoland or HUD to touchdown.		

D-ATIS 124.75 125.625	SALT LAKE CITY APP CON 125.7 284.6	SALT LAKE CITY TOWER 118.3 257.8	GND CON 121.9 348.6	CLNC DEL 127.3 379.975	CPDLC
--------------------------	---------------------------------------	-------------------------------------	------------------------	---------------------------	-------

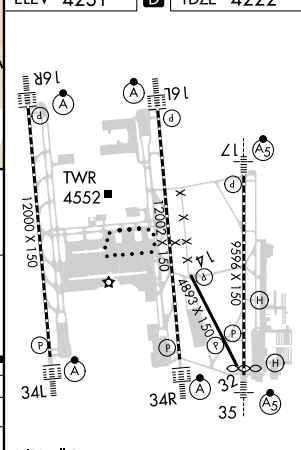


MISSED APCH FIX Chan 115  $\Delta^{4542}$   $\Delta^{6237}$  ELEV 4231 TDZE 4222



CATEGORY	A	B	C	D
S-ILS 17	SA CAT I	RA 150/14 150	DA 4372	
S-ILS 17	SA CAT II	RA 100/12 100	DA 4322	

SA CATEGORY I & II ILS - SPECIAL AIRCREW  
& AIRCRAFT CERTIFICATION REQUIRED



HIRL all Rwy's  
TDZ/CL Rwy's 16L, 16R, 17, 34L,  
34R and 35

SALT LAKE CITY, UTAH  
Amdt 15 20FEB25

40°47'N-111°59'W

SALT LAKE CITY INTL (SLC)

**ILS RWY 17 (SA CAT I & II)**

SW-4, 10 JUL 2025 to 07 AUG 2025