

LOC/DME I-UAT 111.9 Chan 56	APP CRS 164°	Rwy Idg 12000 TDZE 4226 Apt Elev 4231
---	------------------------	--

ILS RWY 16R (CAT II & III)
SALT LAKE CITY INTL (SLC)

RNP APCH - GPS. From EKKHO or WEBER.

DME or RADAR required.

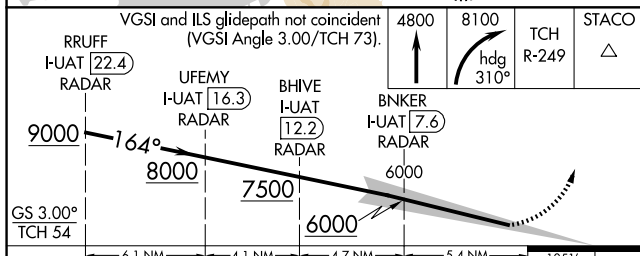
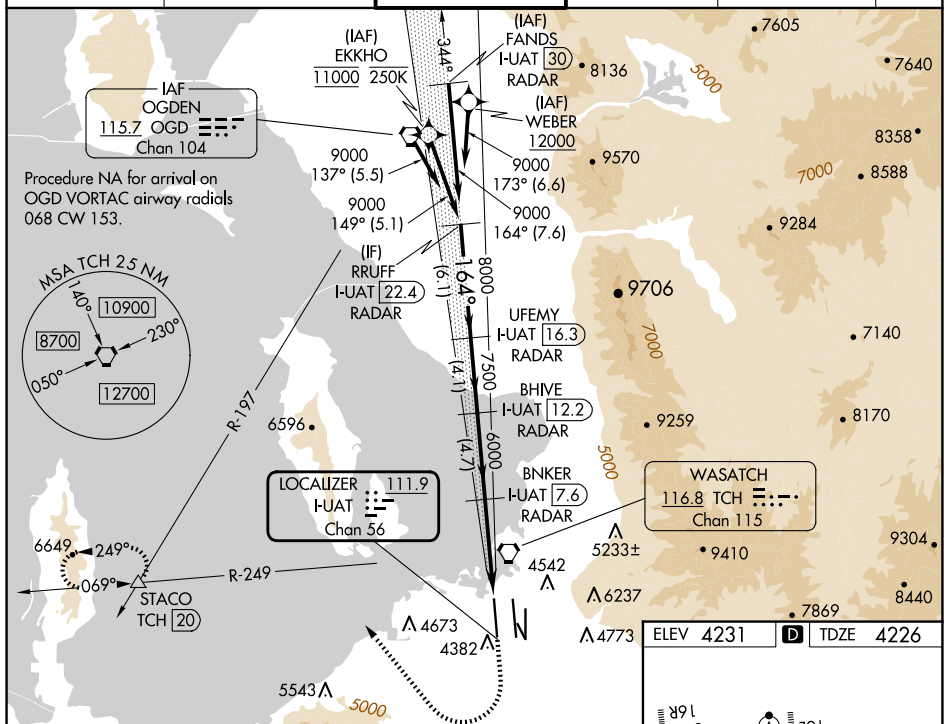
T Simultaneous approach authorized. CAT II: RVR 1000 authorized with specific OPSPEC, MSPEC, or LOA approval and use of autoland or HUD to touchdown.

ALSF-2



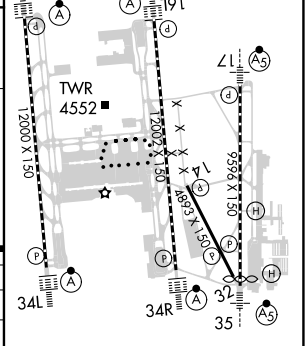
MISSED APPROACH: Climb to 4800 then climbing right turn to 8100 on heading 310° and on TCH VORTAC R-249 to STACO INT/TCH 20 DME and hold.

D-ATIS	SALT LAKE CITY APP CON	SALT LAKE CITY TOWER	GND CON	CLNC DEL	CPDLC
124.75 125.625	125.7 284.6	132.65 336.4	123.775 348.6	127.3 379.975	



CATEGORY	A	B	C	D
S-ILS 16R	CAT II RA 104/12 100 DA 4326			
S-ILS 16R	CAT III RVR 03			

CATEGORY II & III ILS - SPECIAL AIRCREW
& AIRCRAFT CERTIFICATION REQUIRED



HIRL all Rwy's
TDZ/CL Rwy's 16L, 16R, 17, 34L,
34R, and 35