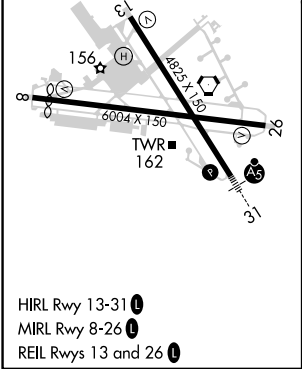
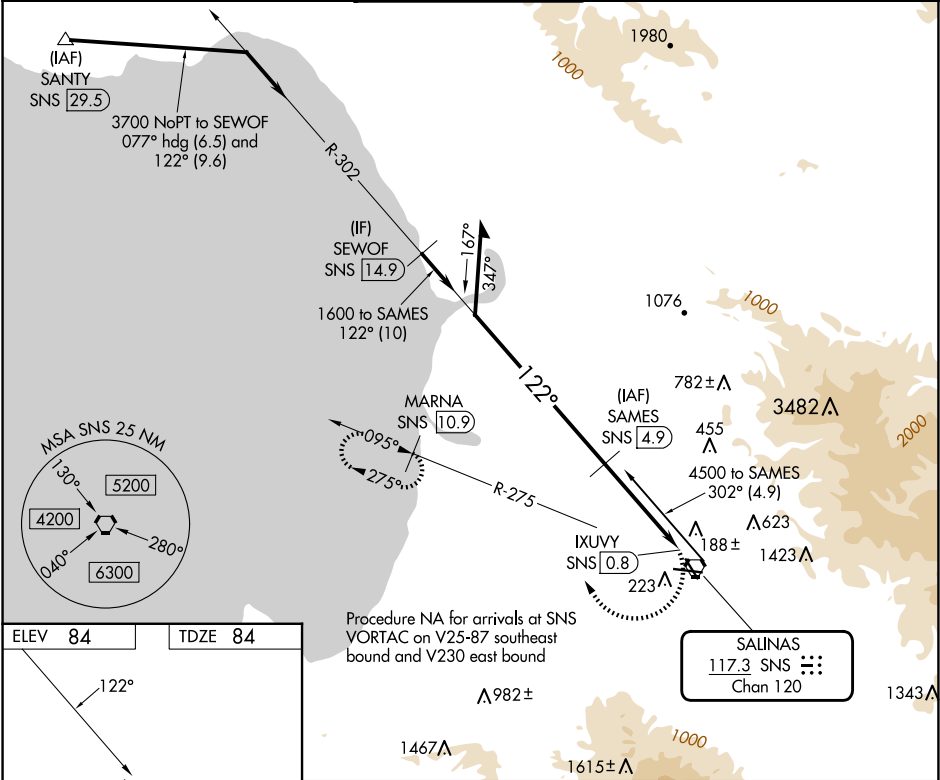


VORTAC SNS	APP CRS	Rwy Idg	4825
117.3	122°	TDZE	84
Chan 120		Apt Elev	84

VOR RWY 13
SALINAS MUNI (SNS)

DME required.	MISSED APPROACH: Climbing right turn to 3000 on SNS VORTAC R-275 to MARN/SNS 10.9 DME and hold, continue climb-in-hold to 3000.
▼ Rwy 13 helicopter visibility reduction below 1 SM NA. Circling NA for Cat C northeast of Rwy 13 and north of Rwy 26 and NA for Cat D northeast of Rwy 13-31.	

ATIS 124.85	NORCAL APP CON 133.0 251.15	SALINAS TOWER ★ 119.525 (CTAF) 239.3	GND CON 121.7	UNICOM 123.0
-----------------------	---------------------------------------	--	-------------------------	------------------------



<div>Remain within 10 NM</div> <div><div>3300</div><div>302°</div><div>122°</div><div>4500</div><div>1600</div><div>3.07°</div><div>TCH 50</div><div>4.1 NM</div><div>0.4</div></div> <div><div>SAMES SNS</div><div>4.9</div></div> <div><div>3000</div><div>SNS R-275</div></div> <div><div>MARNA SNS</div><div>10.9</div></div> <div><div>IXUVY SNS</div><div>0.8</div></div> <div><div>SNS VORTAC</div></div>				
CATEGORY	A	B	C	D
S-13	600-1	516 (600-1)	600-1 $\frac{3}{8}$ 516 (600-1 $\frac{3}{8}$)	760-1 $\frac{7}{8}$ 676 (700-1 $\frac{7}{8}$)
CIRCLING	600-1	516 (600-1)	800-2 716 (800-2)	960-2 $\frac{3}{4}$ 876 (900-2 $\frac{3}{4}$)

SW-2, 10 JUL 2025 to 07 AUG 2025

SW-2, 10 JUL 2025 to 07 AUG 2025