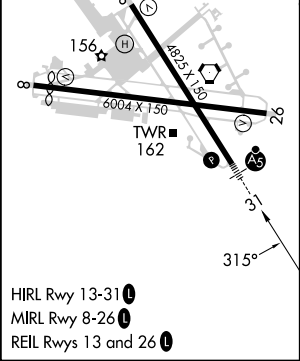
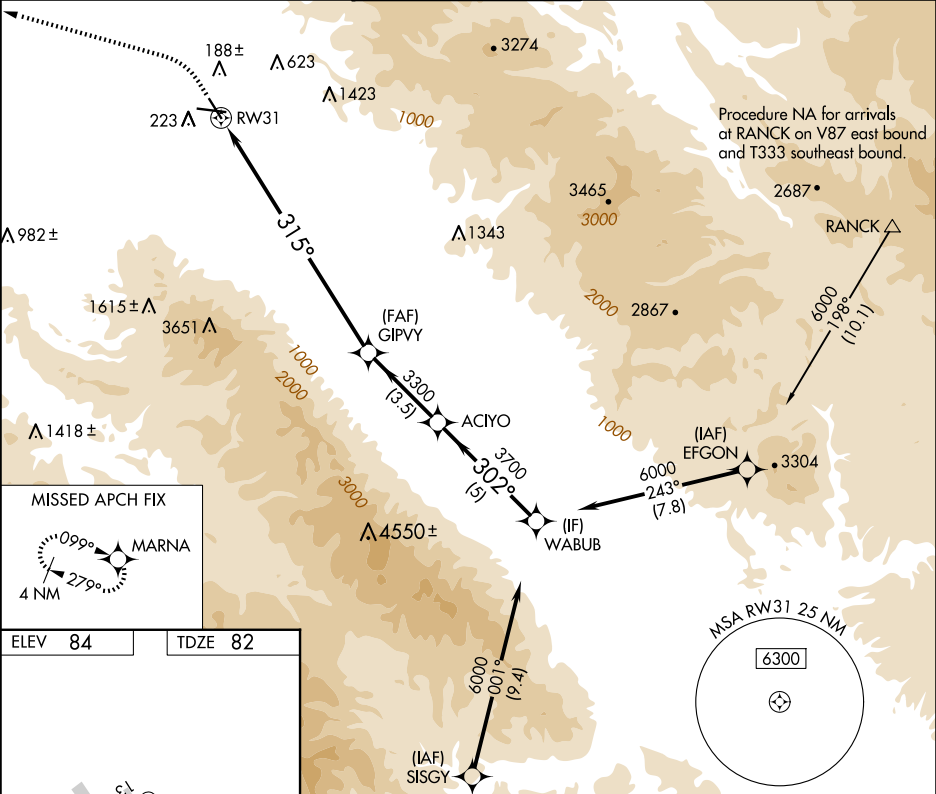


WAAS CH 69513 W31A	APP CRS 315°	Rwy Idg 4825 TDZE 82 Apt Elev 84
--	------------------------	---

RNAV (GPS) Z RWY 31

SALINAS MUNI (SNS)

RNP APCH - GPS.		MALSR	MISSED APPROACH: Climb to 600, then climbing left turn to 3000 direct MARN A and hold, continue climb-in-hold to 3000.	
Baro-VNAV NA.				
ATIS 124.85	NORCAL APP CON 133.0 251.15	SALINAS TOWER ★ 119.525 (CTAF) 0 239.3		GND CON 121.7
				UNICOM 123.0



600		3000		MARN A		VGSI and RNAV glidepath not coincident (VGSI Angle 3.00/TCH 59).	
						WABUB	
RW31		GIPVY		ACIYO		6000	
315°		3300		3700		GP 3.00° TCH 50	
10 NM		3.5 NM		5 NM			
CATEGORY	A	B	C	D			
LPV	DA	302/24 220 (300-½)					
LNNAV/ VNAV	DA	465/35 383 (400-⅝)					