

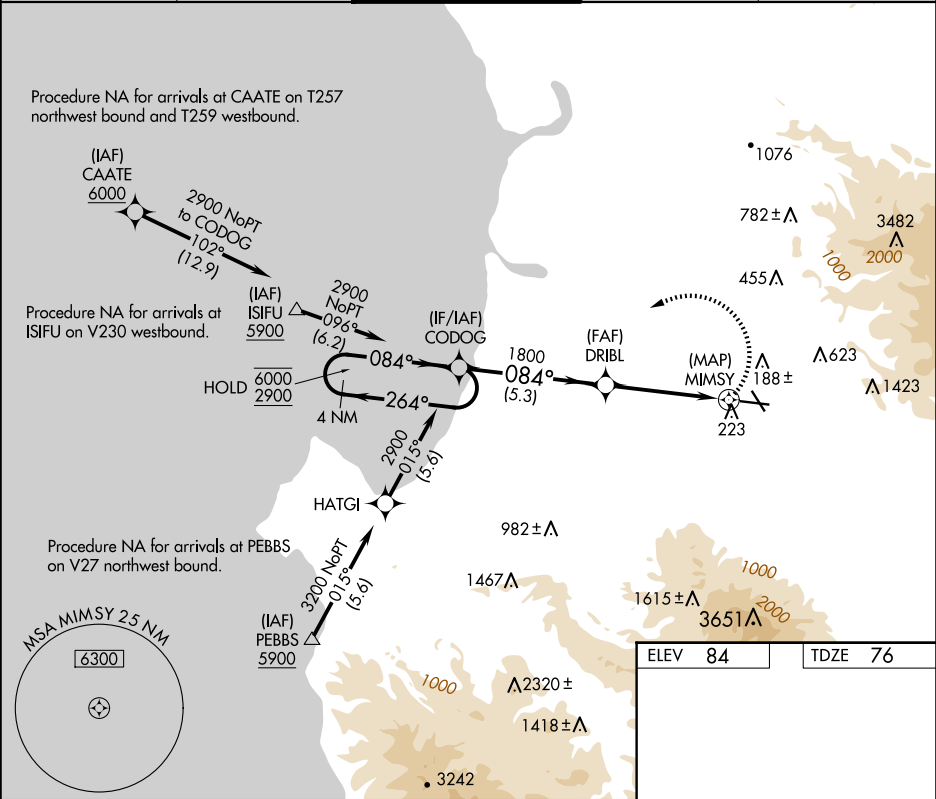
APP CRS	Rwy Idg	5608
084°	TDZE	76
	Apt Elev	84

RNAV (GPS) RWY 8

SALINAS MUNI (SNS)

RNP APCH-GPS.	MISSED APPROACH: (Do not exceed 185K until CODOG) Climbing left turn to 2900 direct CODOG and hold, continue climb-in-hold to 2900.
<div><div></div><div>Circling Cat C/D NA northeast of Rwy 13 and north of Rwy 26.</div></div>	

ATIS 124.85	NORCAL APP CON 133.0 251.15	SALINAS TOWER ★ 119.525 (CTAF) 239.3	GND CON 121.7	UNICOM 123.0
----------------	--------------------------------	---	------------------	-----------------



4 NM Holding Pattern		CODOG		2900 CODOG	
6000 2900		264° 084°		084°	
		DRIBL		1.5 NM to MIMSY	
		3.19° TCH 53		MIMSY	
		5.3 NM		3 NM	
				1.5 NM	
				0.5 NM	
CATEGORY	A	B	C	D	
LNVA MDA	760-1	684 (700-1)	760-2	684 (700-2)	
CIRCLING	760-1	676 (700-1)	800-2 716 (800-2)	1680-3 1596 (1600-3)	
					HIRL Rwy 13-31 MIRL Rwy 8-26 REIL Rws 13 and 26