

LOC I-SNS	APP CRS	Rwy Idg	4825
<u>108.5</u>	315°	TDZE	82
		Apt Elev	84

LOC RWY 31
SALINAS MUNI (SNS)

DME required.

T DME from SNS VORTAC. DME use requires simultaneous
A reception of I-SNS and SNS DME. Circling NA for Cats C
and D northeast of Rwy 13 and north of Rwy 26. For inop
ALS, increase S-LOC-31 visibility Cats C and D to RVR 5000.

MALSR



MISSED APPROACH: Climb to 800 then climbing left turn to 3000 on SNS VORTAC R-275 to MARNA/SNS 10.9 DME and hold, continue climb-in-hold to 3000.

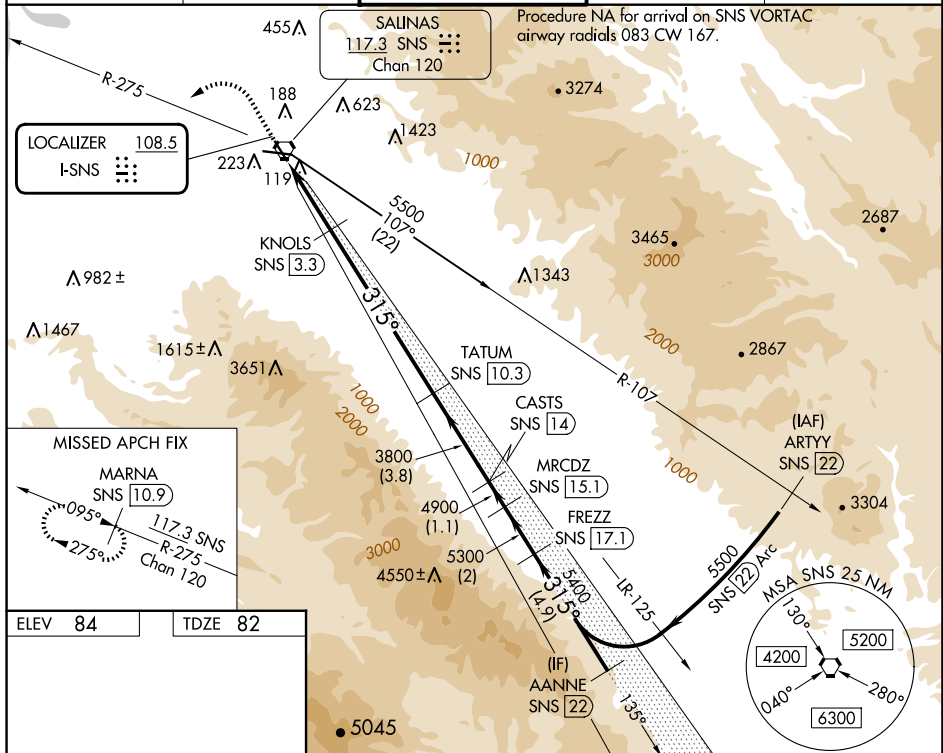
ATIS
124.85

NORCAL APP CON
133.0 251.15

SALINAS TOWER ★
119.525 (CTAF) 239.3

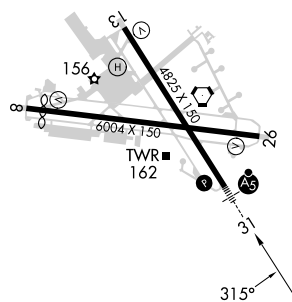
GND CON
121.7

UNICOM
123.0



FIFV 84

TDZF 82



HIRL Rwy 13-31 **L**
MIRL Rwy 8-26 **L**
REIL Rwy 13 and 26 **L**

[illegible]