

VORTAC SLN	APP CRS	Rwy Ldg	12300
117.1	183°	TDZE	1246
Chan 118		Apt Elev	1288

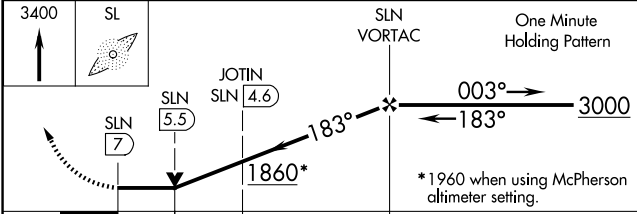
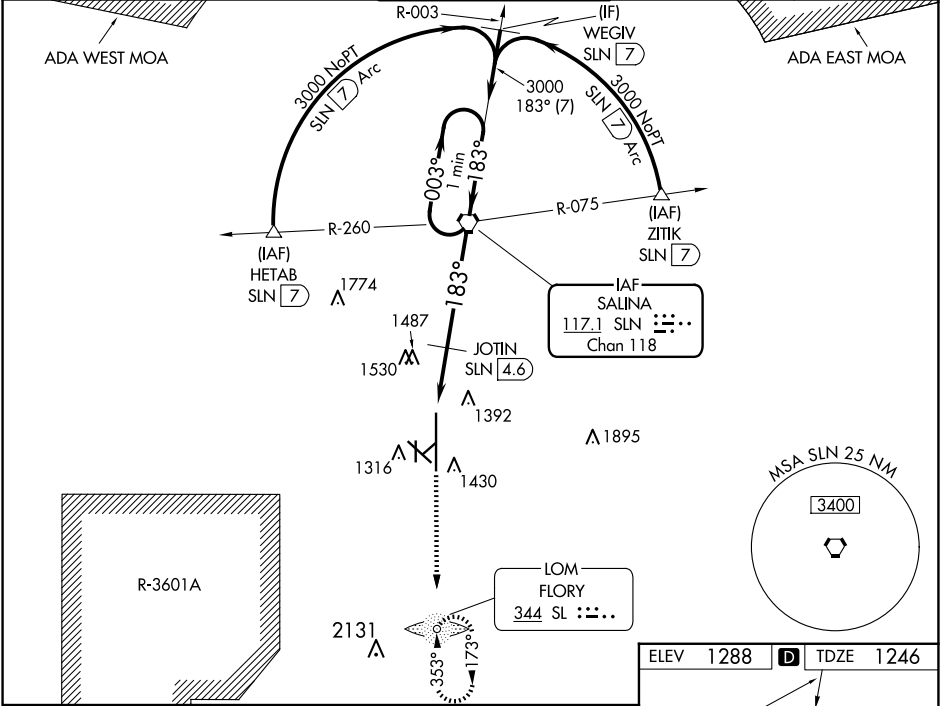
VOR RWY 17
SALINA RGNL (SLN)

⚠ Inoperative table does not apply to Cat C/D/E.
⚠ Circling NA for Cat D/E southwest of Rwy 12-30.
ADF required.

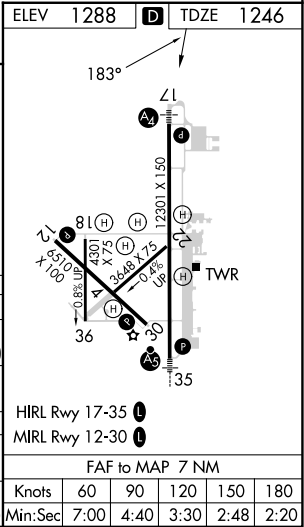
MALS

MISSED APPROACH: Climb to 3400 direct SL LOM and hold.

ATIS 120.15	KANSAS CITY CENTER 134.9 363.2	SALINA TOWER * 119.3 (CTAF) 0 257.7	GND CON 121.9 360.8	UNICOM 122.95
----------------	-----------------------------------	--	------------------------	------------------



CATEGORY	A	B	C	D	E
S-17	1860-3/4 614 (600-3/4)		1860-1 3/4 614 (600-1 3/4)	1860-2 614 (600-2)	1860-2 1/4 614 (600-2 1/4)
CIRCLING	1860-1 572 (600-1)		1860-1 3/4 572 (600-1 3/4)	1860-2 572 (600-2)	1920-2 1/4 632 (700-2 1/4)
JOTIN FIX MINIMUMS					
S-17	1760-3/4 514 (500-3/4)		1760-1 1/2 514 (500-1 1/2)	1760-1 3/4 514 (500-1 3/4)	
CIRCLING	1820-1 532 (600-1)	1840-1 552 (600-1)	1860-1 1/2 572 (600-1 1/2)	1860-2 572 (600-2)	1920-2 1/4 632 (700-2 1/4)



NC-2, 10 JUL 2025 to 07 AUG 2025

NC-2, 10 JUL 2025 to 07 AUG 2025