

|         |          |      |
|---------|----------|------|
| APP CRS | Rwy Ldg  | 6510 |
| 305°    | TDZE     | 1273 |
|         | Apt Elev | 1288 |

RNAV (GPS) RWY 30

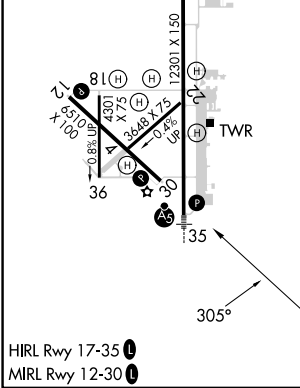
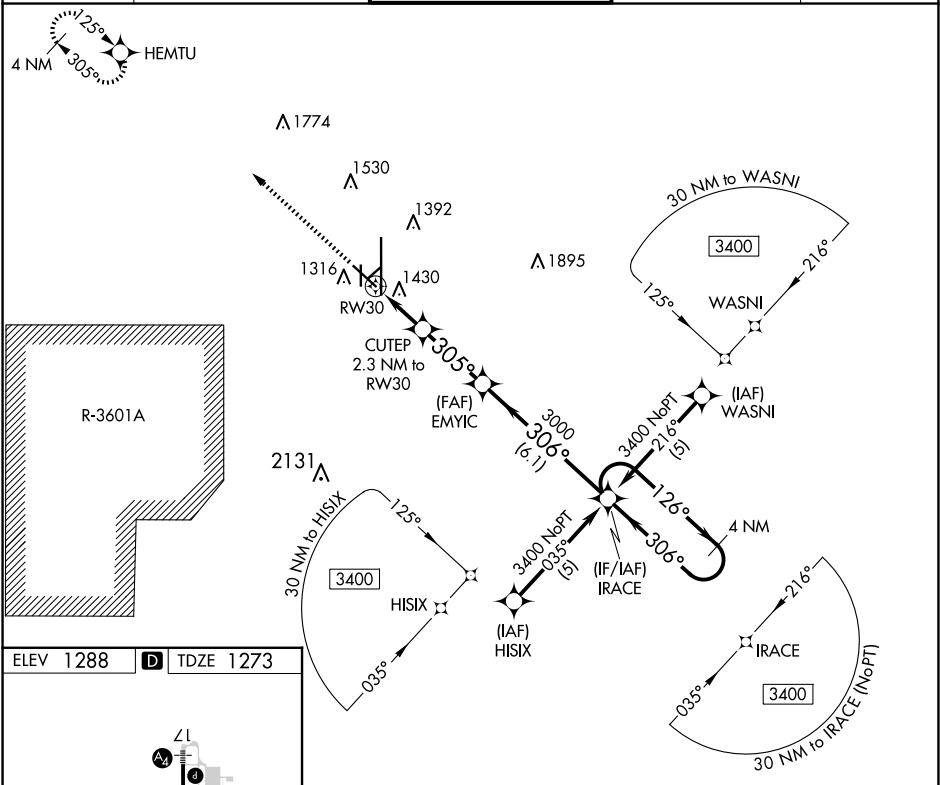
SALINA RGNL (SLN)

⚠

Circling NA for Cat D southwest of runway 12-30.  
DME/DME RNP-0.3 NA.

MISSED APPROACH: Climb to 3400 direct HEMTU and hold.

|        |                    |                      |             |        |
|--------|--------------------|----------------------|-------------|--------|
| ATIS   | KANSAS CITY CENTER | SALINA TOWER ★       | GND CON     | UNICOM |
| 120.15 | 134.9 363.2        | 119.3 (CTAF) 0 257.7 | 121.9 360.8 | 122.95 |



|   |                       |  |   |                       |
|---|-----------------------|--|---|-----------------------|
| <div>3400<br/>↑</div> <div>HEMTU<br/></div>   |                       | <div>IRACE</div> <div>4 NM<br/>Holding Pattern</div>                               |   |                       |
| <div>CUTEP<br/>2.3 NM to<br/>RW30</div> <div>1.1 NM to<br/>RW30</div> <div>RW30</div> <div>2040</div> <div>1.1 NM</div> <div>1.2 NM</div> <div>2.9 NM</div> |                       | <div>EMYIC</div> <div>305°</div> <div>3000</div> <div>306°</div> <div>6.1 NM</div> | <div>126°</div> <div>306°</div> <div>3400</div> |                       |
| <div>3.04°</div> <div>TCH 45°</div>   |                       |  |   |                       |
| CATEGORY  | A                     | B  | C   | D                     |
| LNAV MDA  | 1680-1 407 (400-1)    |  | 1680-1¼ 407 (400-1¼)                            |                       |
| CIRCLING  | 1820-1<br>532 (600-1) | 1840-1<br>552 (600-1)  | 1860-1½<br>572 (600-1½)                         | 1860-2<br>572 (600-2) |