

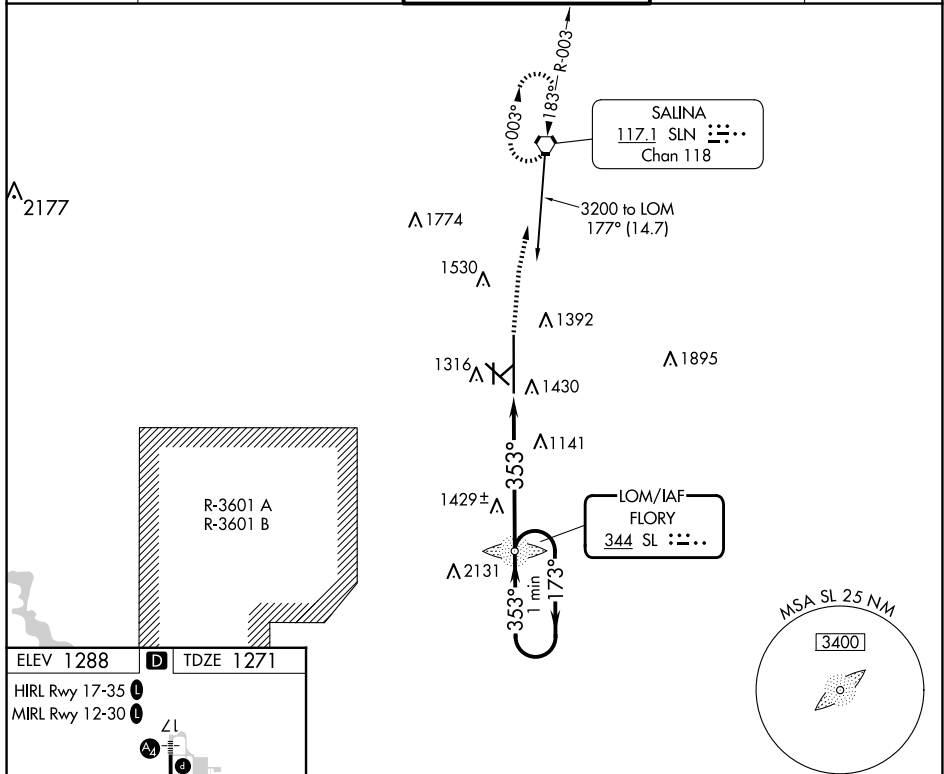


LOM SL <u>344</u>	APP CRS 353°	Rwy Ldg 12300 TDZE 1271 Apt Elev 1288
-----------------------------	------------------------	--

NDB RWY 35
SALINA RGNL (SLN)

	<p>Cat D Circling NA southwest of runway 12-30. For inop ALS, increase S-35 Cats A/B visibility to 1 SM and Cats C/D to 1½ SM.</p>	<p>MALSR</p> 	<p>MISSED APPROACH: Climb to 3000 direct SLN VORTAC and hold.</p>
--	--	--	---

ATIS 120.15	KANSAS CITY CENTER 134.9 363.2	SALINA TOWER ★ 119.3 (CTAF) 0 257.7	GND CON 121.9 360.8	UNICOM 122.95
-----------------------	--	---	-------------------------------	-------------------------



ELEV 1288 **D** TDZE 1271

HIRL Rwy 17-35 **(L)**
MIRL Rwy 12-30 **(L)**

Diagram illustrating the runway layout and associated navigation aids for Runway 17-35. The diagram shows a vertical runway with a horizontal crosswind runway branching off to the left. The vertical runway has a length of 12301 feet and a width of 150 feet. The crosswind runway has a length of 4301 feet and a width of 75 feet. The diagram includes various navigation aids, including a VOR station (V) and a TWR (Tower). The diagram also shows the runway numbers 17, 35, 36, and 30. The diagram is labeled with 'ZL' at the top and '353°' at the bottom.

FAF to MAB 5.7 NM					
Knots	60	90	120	150	180
Min:Sec	5:42	3:48	2:51	2:17	1:54

Diagram illustrating a One Minute Holding Pattern. The pattern is defined by a 5.7 NM radius. The diagram shows a 173° outbound leg and a 353° inbound leg. The pattern is centered on a 5.7 NM radius. The diagram also shows a 3.10° TCH 56° angle. The diagram is labeled "One Minute Holding Pattern" and "VGS1 and descent angles not coincident (VGS1 Angle 3.00/TCH 48)".

NC-2, 10 JUL 2025 to 07 AUG 2025

NC-2, 10 JUL 2025 to 07 AUG 2025